

# THE SOUTHPORT<sup>®</sup>

OPTIONAL ELEVATION D



\*Rendering is an artist's conception and is for illustrative purposes only.



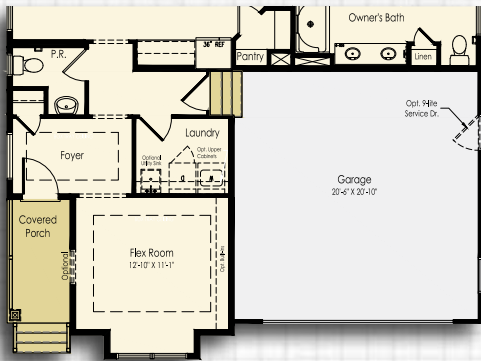
# ELEVATIONS

INCLUDED ELEVATION A

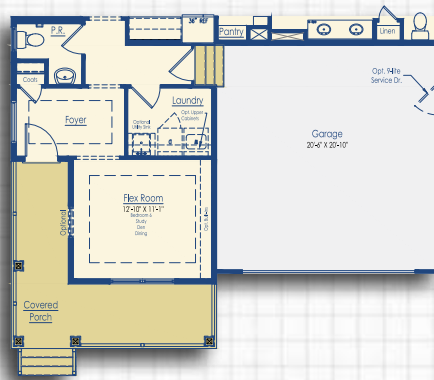
OPTIONAL ELEVATION B

OPTIONAL ELEVATION C

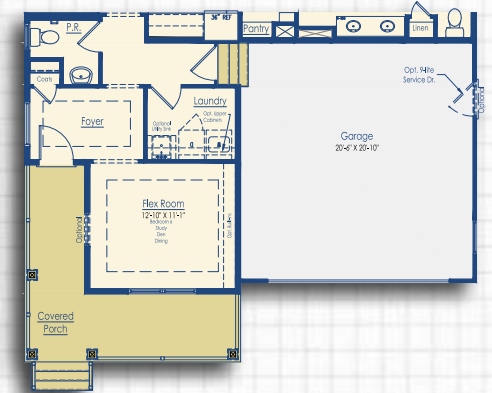
OPTIONAL ELEVATION D



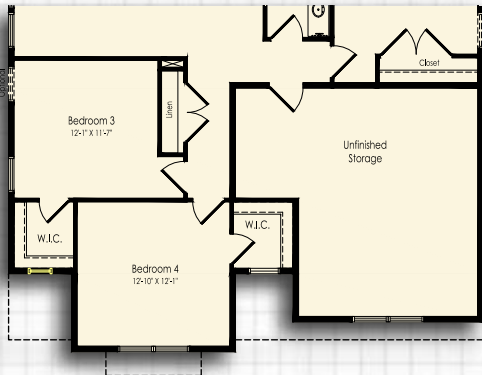
Included Elevation A  
First Floor



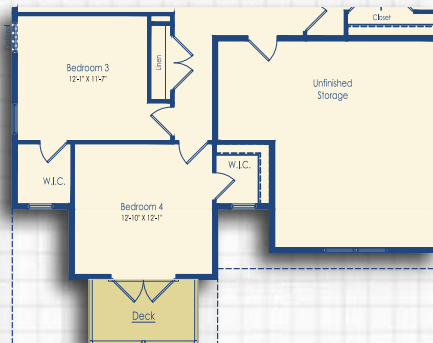
Optional Elevation B & D  
First Floor



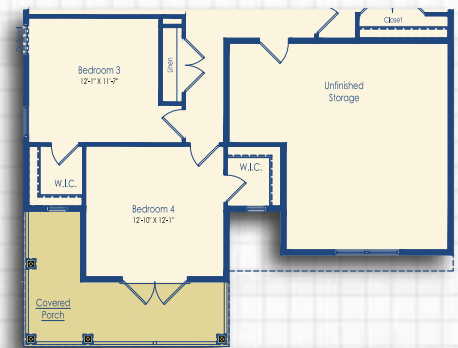
Optional Elevation C  
First Floor



Included Elevation A  
Second Floor



Optional Elevation B & D  
Second Floor



Optional Elevation C  
Second Floor

# ELEVATIONS

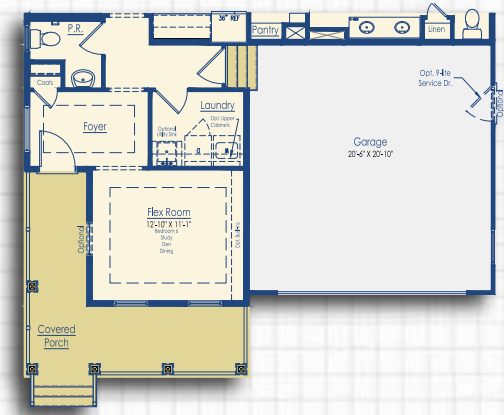
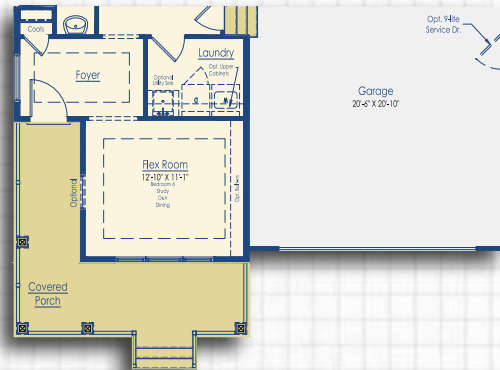
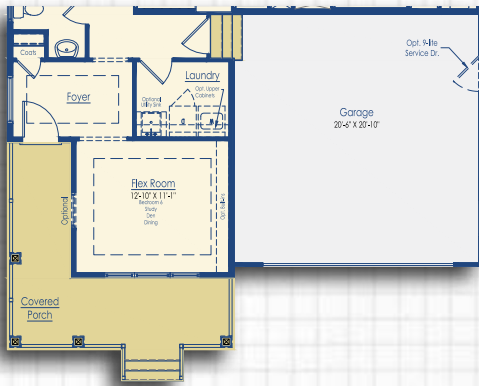
OPTIONAL CRAFTSMAN ELEVATION



OPTIONAL MODERN FARMHOUSE



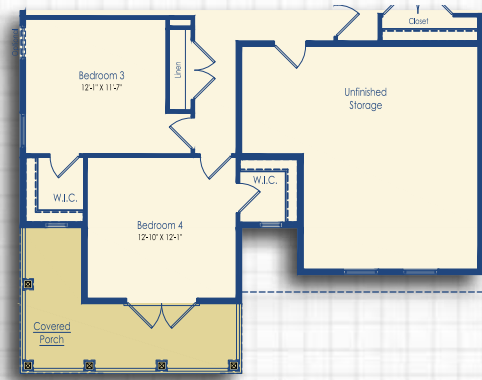
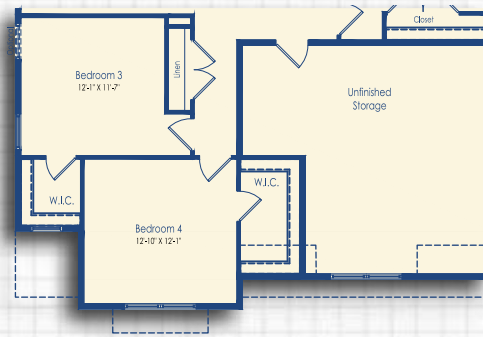
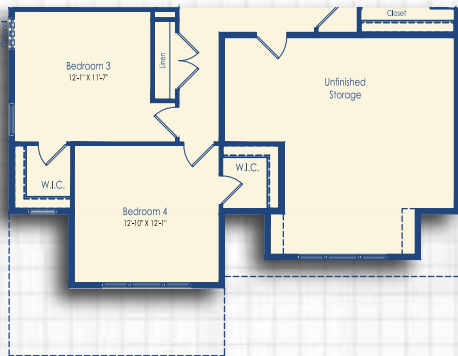
OPTIONAL ELEVATION E



Optional Craftsman Elevation  
First Floor

Optional Modern Farmhouse Elevation  
First Floor

Optional Elevation E  
First Floor



Optional Craftsman Elevation  
Second Floor

Optional Modern Farmhouse Elevation  
Second Floor

Optional Elevation E  
Second Floor

# FLOOR PLAN

## THE SOUTHPORT

Beds	4 - 6
Baths	2.5 - 4
Heated Sq. Ft.	2,720 - 5,210
Total Sq. Ft.	3,554 - 6,550

\*Floor plan dimensions are approximate.



First Floor  
Elevation A



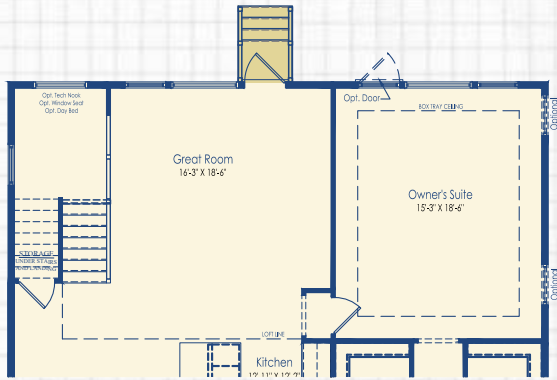
Second Floor  
Elevation A

\*Renderings are artist's conception. All information is subject to change without notice.

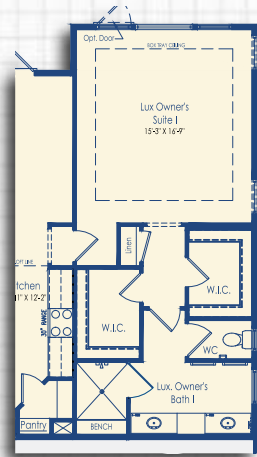
# FIRST FLOOR STRUCTURAL OPTIONS

**SQUARE FOOTAGE**  
 4' Owner's Suite Extension +65

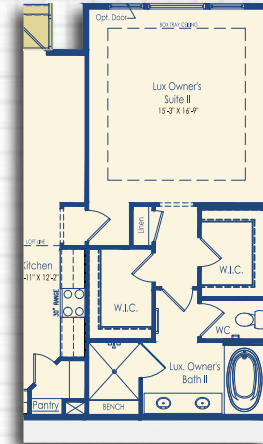
\*Floor plan dimensions are approximate



Optional 2' Rear Extension



Optional Luxury Owner's Suite I

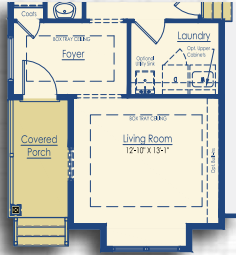


Optional Luxury Owner's Suite II

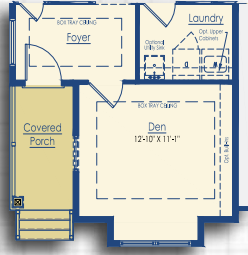


Optional Inset Fireplace

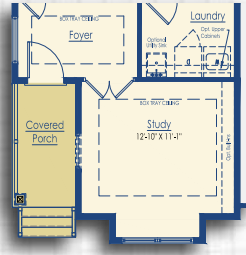
## FLEX ROOM OPTIONS



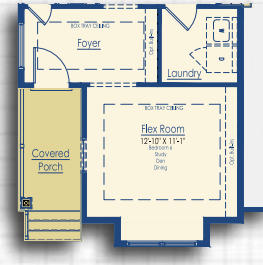
Optional Living Room  
Elevation A and  
Modern Farmhouse



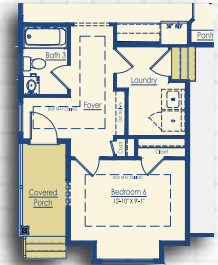
Optional Den  
Elevation A and  
Modern Farmhouse



Optional Study  
Elevation A and  
Modern Farmhouse

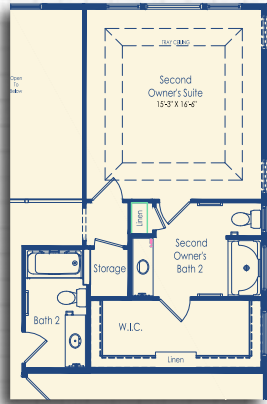


Flex Room with Alternate  
Laundry Layout

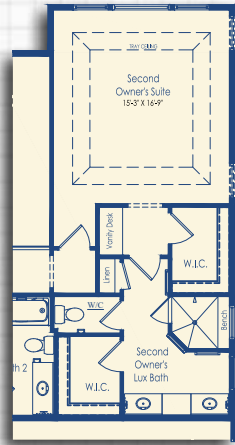


Optional Bedroom 4 with  
Bath 3  
Elevation B

## SECOND FLOOR OPTIONS



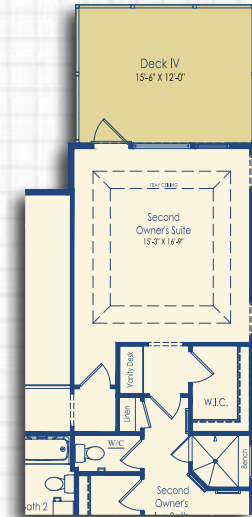
Optional Second Floor  
Owner's Suite I



Optional Second Floor  
Luxury Owner's Suite

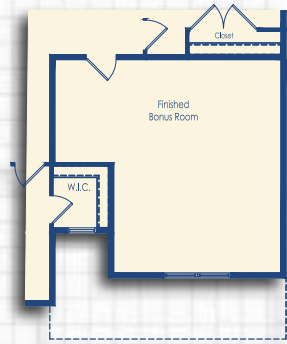


Optional Second Floor  
Owner's Suite with Deck IV

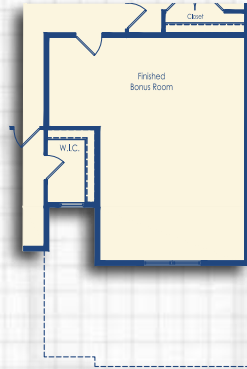


Optional Second Floor  
Luxury Owner's Suite with  
Deck IV

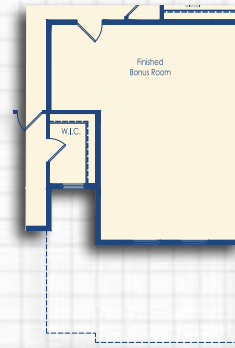
# SECOND FLOOR OPTIONS



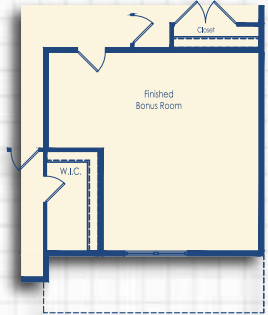
Optional Bonus Room  
Elevations A, B, C, and D



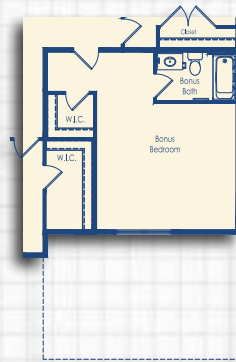
Optional Finished Bonus Room  
with 3 Car Side Load Garage  
Elevations A, B, C, and D



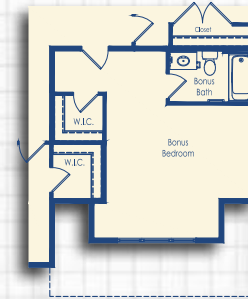
Optional Finished Bonus Room  
with 4' Garage Extension  
Elevations A, B, C, and D



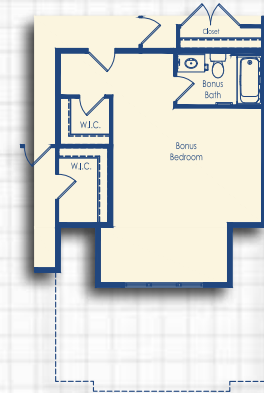
Optional Finished Bonus Room  
with 4' Garage Extension  
Modern Farmhouse Elevation



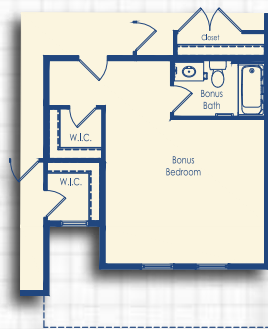
Optional Bonus Bedroom with  
3-Car Garage  
Modern Farmhouse Elevation



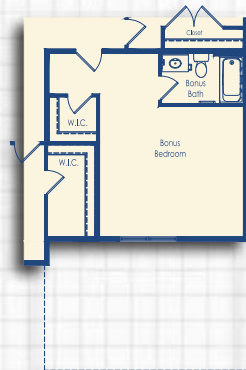
Optional Bonus Bedroom with 4'  
Garage Extension  
Craftsman Elevation



Optional Bonus Bedroom with  
3-Car Garage  
Craftsman Elevation



Optional Bonus Bedroom with 4'  
Garage Extension  
Elevation E



Optional Bonus Bedroom with 3  
Car Side Load Garage  
Elevation E

## KITCHEN OPTIONS



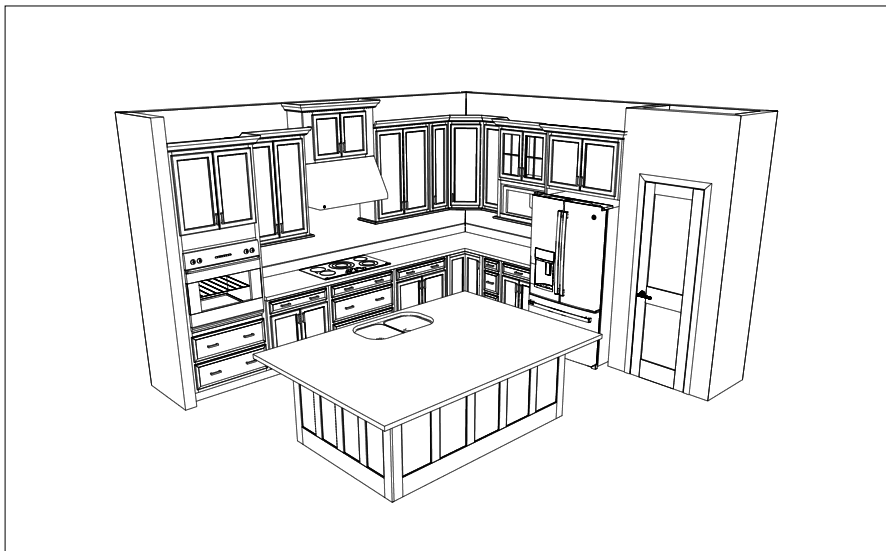
### **Included Kitchen has the following included features:**

Select Cabinets, (1) Drawer Base with Side Mounted Drawer Slides, Small Crown, Free-Standing Range, and Microwave.



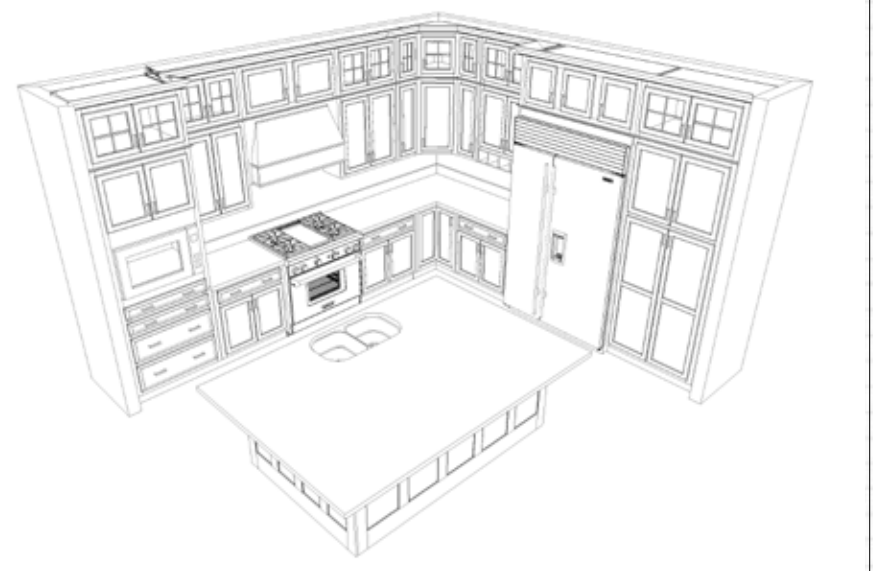
### **Optional Gourmet Kitchen has the following features:**

Premier Series Cabinetry, Drawer Base Mix, Full Extension/Soft Close Drawers, Pull-Out Trash, High Crown, Matching End Panels, Light Rail, Glass Cabinets, 30" cooktop, Wall Oven(s), and Microwave.



### **Optional Professional's Kitchen has the following features:**

Premier Series Cabinetry, 36" Stainless Hood, Drawer Base Mix, Full Extension/Soft Close Drawers, Pull-Out Trash, High Crown, Matching End Panels, Light Rail, Glass Cabinets, 36" cooktop, Wall Oven(s), and Built-In Microwave.



### **Optional Chef's Kitchen has the following features:**

Premier Series Cabinetry, Wood Hood, Drawer Base Mix, Full Extension/Soft Close Drawers, Pull-Out Trash, High Crown, Matching End Panels, Light Rail, Glass Cabinets, 48" Monogram Refrigerator, 6-Burner Monogram Free-Standing Range, and Built-In Microwave.



# BASEMENT OPTIONS

## SQUARE FOOTAGE

### Unfinished Basement

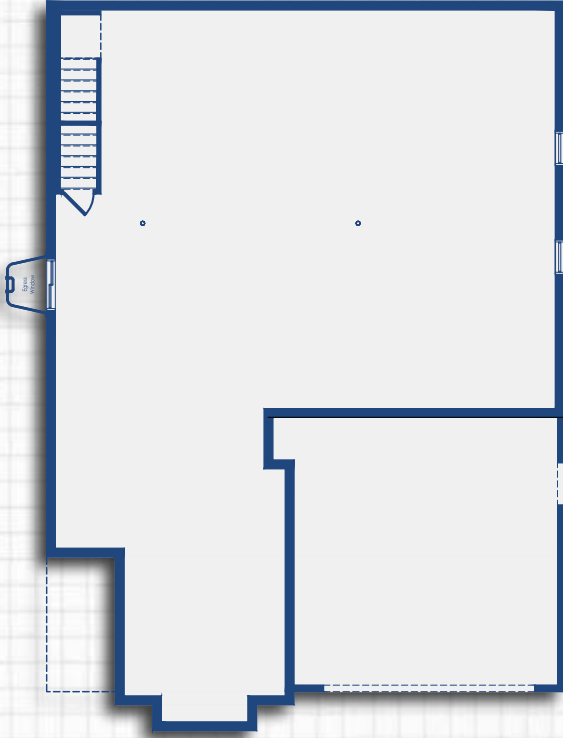
Elevation A 1430

Elevation B, C, & D 1414

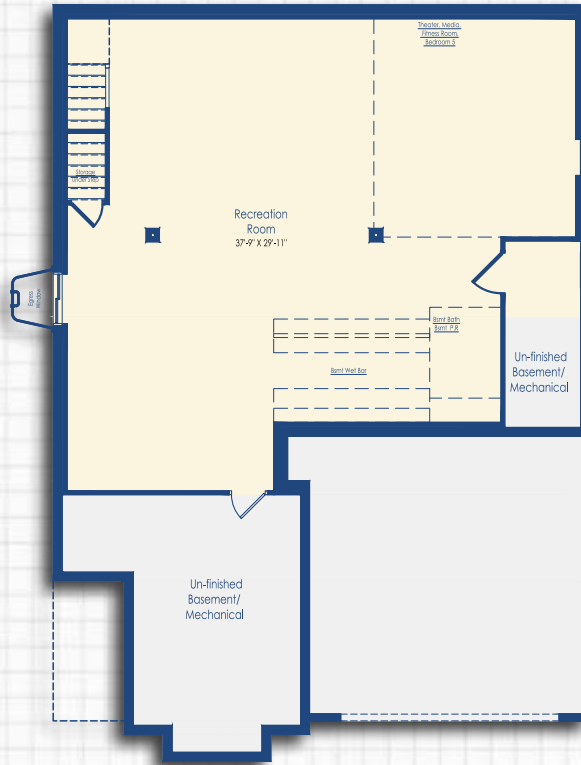
### Finished Basement

Media Room +31

\*Floor plan dimensions are approximate.



Unfinished Basement



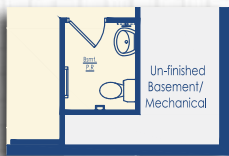
Finished Basement



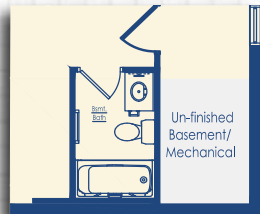
Optional Welled Exit



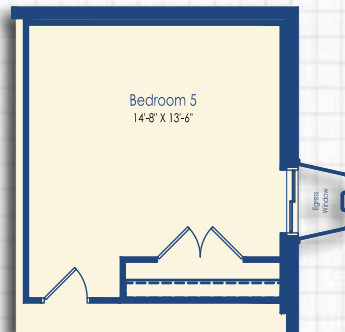
Optional Basement Bar



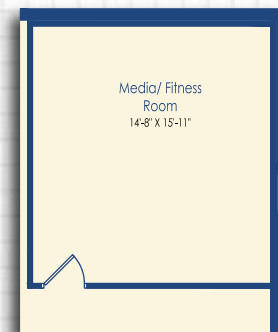
Optional Basement Powder Room



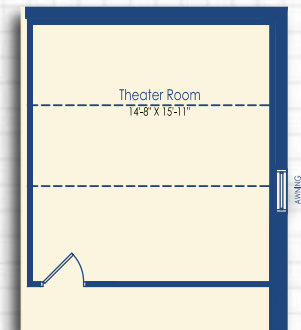
Optional Basement Bath



Optional Bedroom 5



Optional Media Room



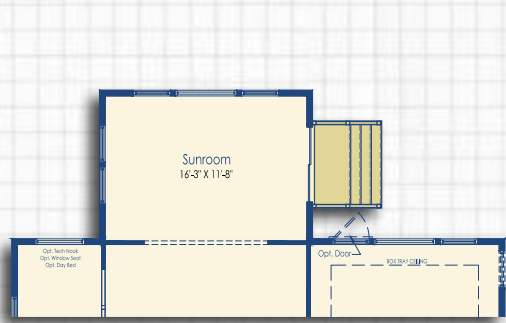
Optional Theater Room

# SUNROOM, SCREEN PORCH, AND DECK OPTIONS

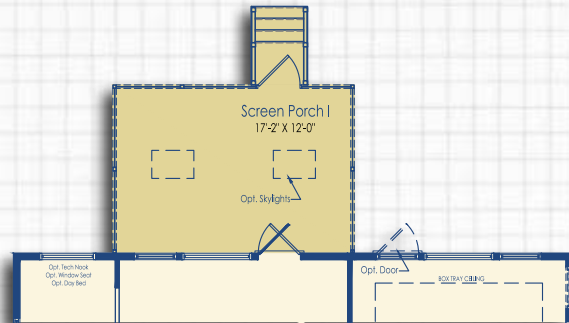
## SQUARE FOOTAGE

Sunroom +209  
 Screen Porch +207

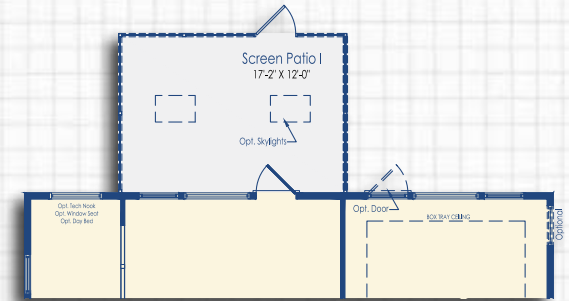
\*Floor plan dimensions are approximate



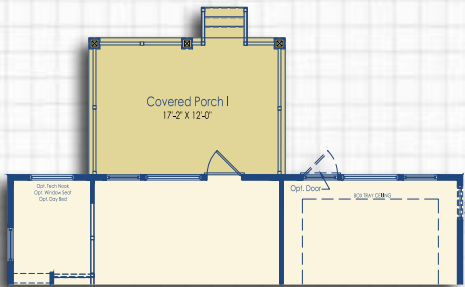
Optional Sunroom



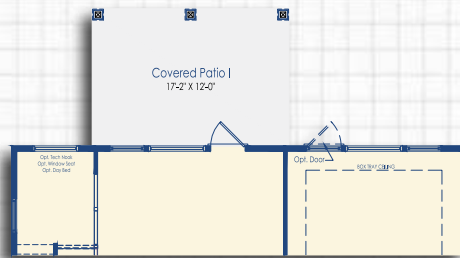
Optional Screen Porch



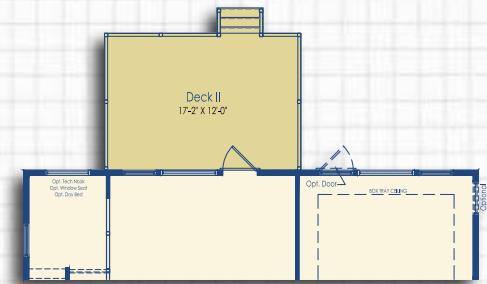
Optional Screen Patio



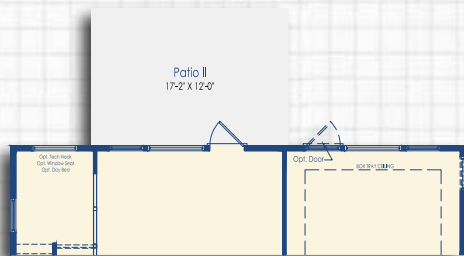
Optional Covered Porch I



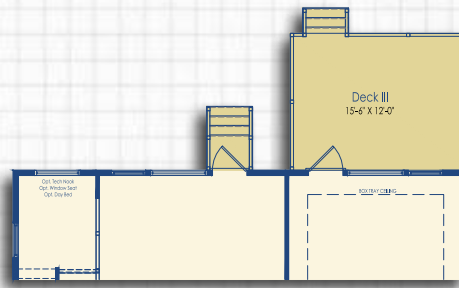
Optional Covered Patio



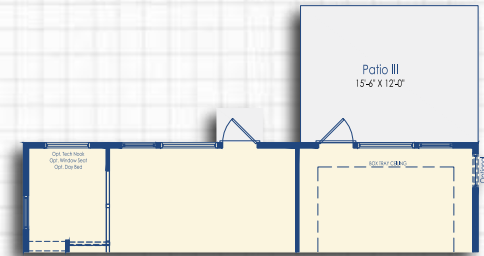
Optional Deck I



Optional Patio I

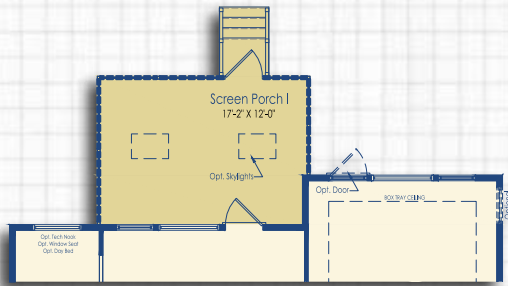


Optional Deck III

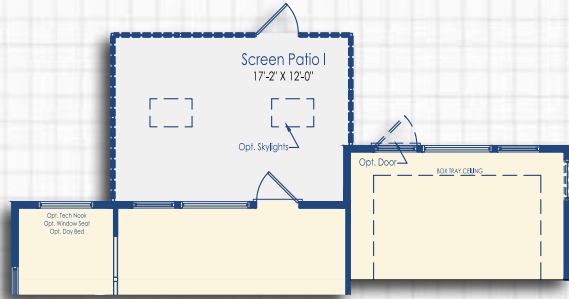


Optional Patio III

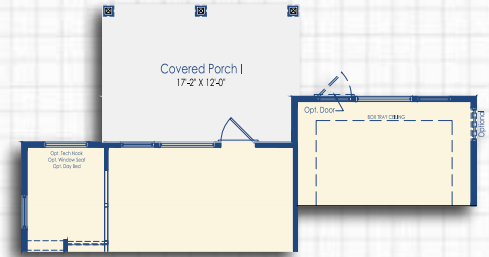
# SUNROOM, SCREEN PORCH, AND DECK OPTIONS



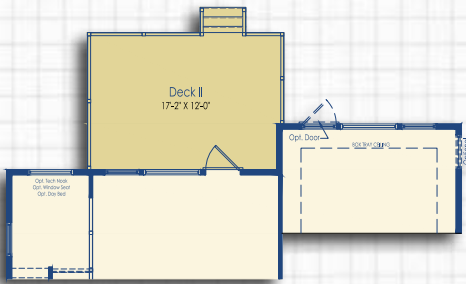
Optional Screen Porch with Optional Luxury Owner's Suite



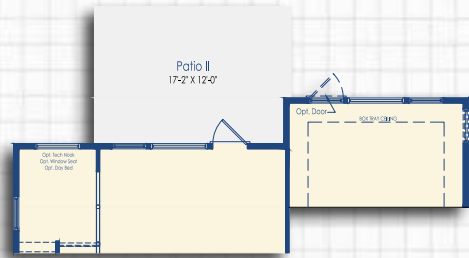
Optional Screen Patio with Optional Luxury Owner's Suite



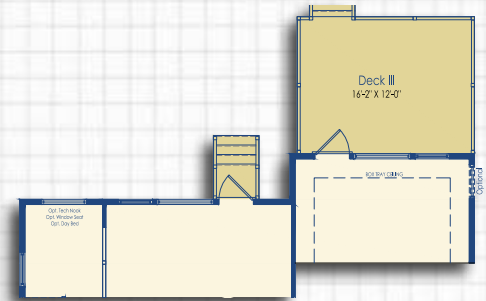
Optional Covered Patio I with Optional Luxury Owner's Suite



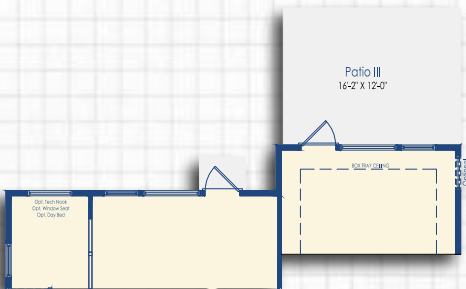
Optional Deck I with Optional Luxury Owner's Suite



Optional Patio II with Optional Luxury Owner's Suite

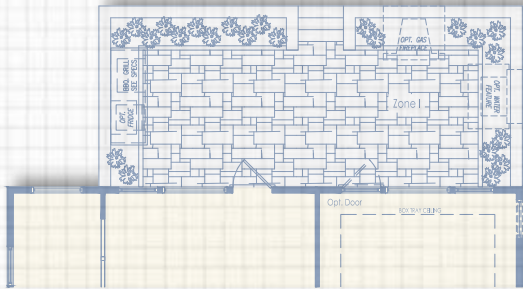


Optional Deck III with Optional Luxury Owner's Suite

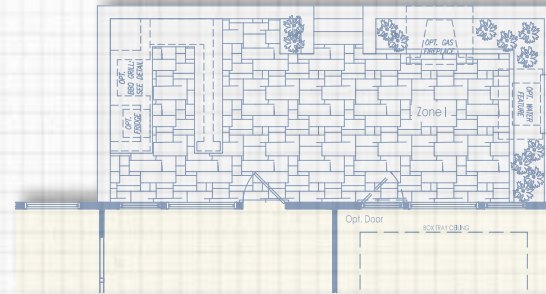


Optional Patio III with Optional Luxury Owner's Suite

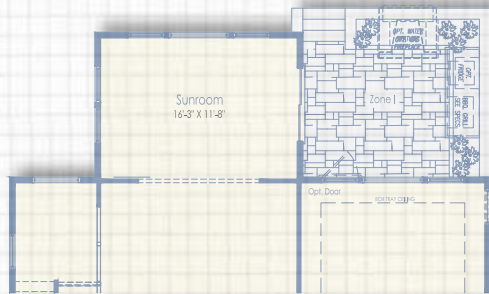
# COURTYARD OPTIONS



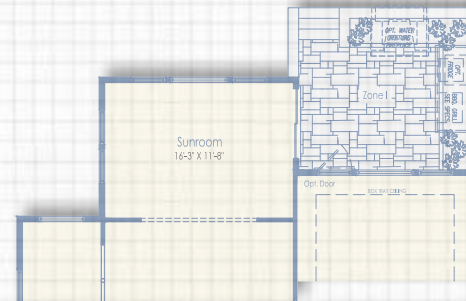
Optional Courtyard



Optional Courtyard with Optional Peninsula Bar



Optional Courtyard with Optional Sunroom



Optional Courtyard with Optional Sunroom and Luxury Owner's Suite