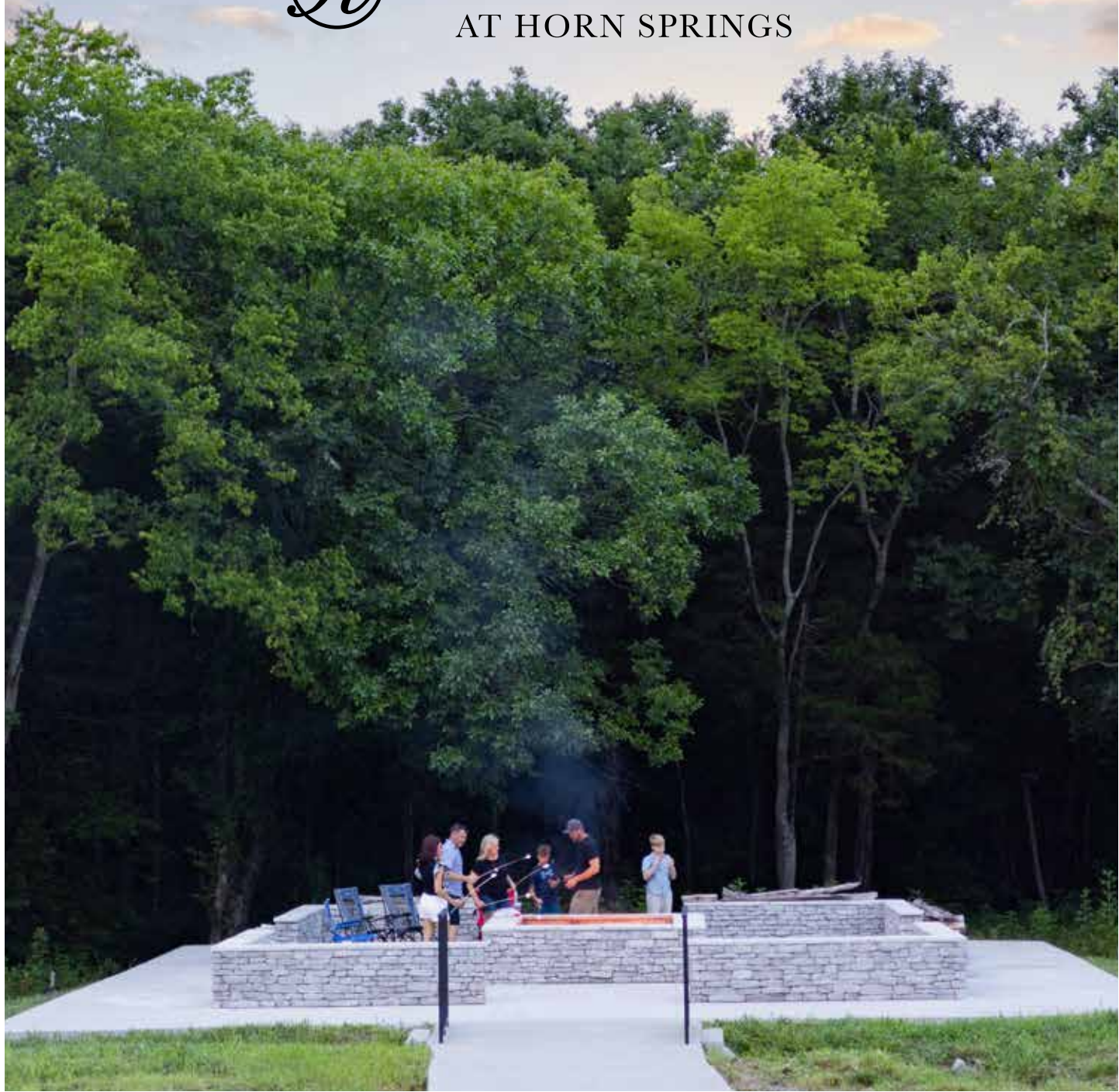




*R* *The Reserve*  
AT HORN SPRINGS



# GET TO KNOW THE RESERVE AT HORN SPRINGS!

## Why The Reserve at Horn Springs?

Be close to the hustle and bustle of downtown but live in a pastoral setting at The Reserve at Horn Springs. This gated community boasts wooded lots with views of the nearby creek and a community fire pit area and is in one of the top school districts.

## How many homes are in the community?

Once completed, The Reserve at Horn Springs will have 77 homes.

## How big are the homesites?

Homesites range from 0.23 to 0.35 acres. Many homesites are wooded.

## What is the heat/energy source?

This is a natural gas community.

## Who are the utility companies?

Natural Gas: Lebanon Gas

Electric: Middle Tennessee Electric Co (MTEC)

Water: LaGuardo Utility District

Sewer: Wilson County Wastewater Authority/  
Adenus

Internet/Cable: AT&T Fiber

## What type of floor plans are offered at The Reserve at Horn Springs?

The Reserve at Horn Springs offers a variety of single-family floor plans ranging from 2,500 heated sqft up to 5,000+ heated sqft based on personalized selections. Each home offers something a little different; whether you're looking for a first-floor or second-floor primary suite, a tech nook for kids to do their homework, or a place to entertain friends & family, we have the right home to fit your needs. 3 car side load garages are required at The Reserve at Horn Springs, and some floor plans may require additional options to meet community minimum square footage standards.

## What's included in the HOA benefits & what are the fees?

The Reserve at Horn Springs' HOA dues are \$50/month and includes common space maintenance, gated entrance maintenance, and a community fire pit area.

## What school district is The Reserve at Horn Springs located in?

The Reserve at Horn Springs is located in the Wilson County School District. The schools that service this community are Carroll Oakland School (K-8), Lebanon High School.

## SITE PLAN



Available Homesites Sold Model / Future Models Quick Move In Home





Scan me  
for pricing  
and incentives

# The Whimbrel

Beds: 3 - 6 | Baths: 2 - 4

Heated Sqft: 1,971 - 5,204 | Total Sqft: 2,544 - 6,812

\* Must add structural option to meet minimum 2,500 heated sqft requirement

\*Floor plan dimensions are approximate. Floor plans have an extensive list of structural options for further personalization.



FIRST FLOOR  
Included Elevation A

A 3-Car Side Load Garage is required  
at The Reserve at Horn Springs





Scan me  
for pricing  
and incentives



Optional Farmhouse Elevation

# The Jasmine

Beds: 3 - 6 | Baths: 2.5 - 5.5 |

Heated Sqft: 2,301 - 4,830 | Total Sqft: 3,159 - 6,095

\* Must add structural option to meet minimum 2,500 heated sqft requirement

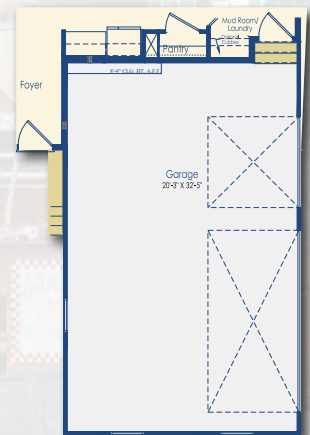
*\*Floor plan dimensions are approximate. Floor plans have an extensive list of structural options for further personalization.*



FIRST FLOOR  
Included Elevation A



SECOND FLOOR  
Included Elevation A



A 3-Car Side Load Garage is required  
at The Reserve at Horn Springs



Scan me  
for pricing  
and incentives



Optional Elevation B

# The Lilac

Beds: 4 - 6 | Baths: 2.5 - 4.5 |

Heated Sqft: 2,431 - 4,820 | Total Sqft: 3,208 - 6,739

\* Must add structural option to meet minimum 2,500 heated sqft requirement

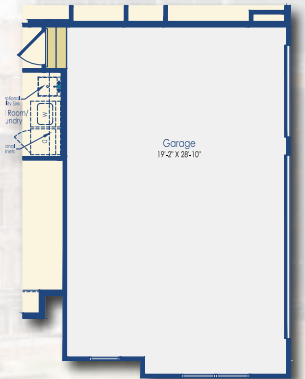
\*Floor plan dimensions are approximate. Floor plans have an extensive list of structural options for further personalization.



FIRST FLOOR  
Standard Plan



SECOND FLOOR  
Standard Plan



A 3-Car Side Load Garage is required  
at The Reserve at Horn Springs





Scan me  
for pricing  
and incentives



Optional Elevation B

# The Bethany

Beds: 4 - 8 | Baths: 2.5 - 6.5

Heated Sqft: 3,028 - 6,824 | Total Sqft: 3,930 - 8,414

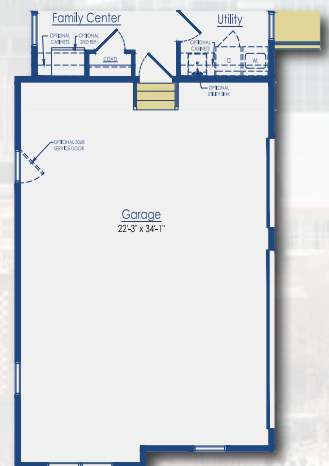
*\*Floor plan dimensions are approximate. Floor plans have an extensive list of structural options for further personalization.*



FIRST FLOOR  
Included Elevation A



SECOND FLOOR  
Included Elevation A



A 3-Car Side Load Garage is required  
at The Reserve at Horn Springs





Optional Elevation C



Scan me  
for pricing  
and incentives

# The Kingfisher

Beds: 3 - 7 | Baths: 2.5 - 7 |  
Heated Sqft: 2,566 - 5,750 | Total Sqft: 3,531 - 7,514

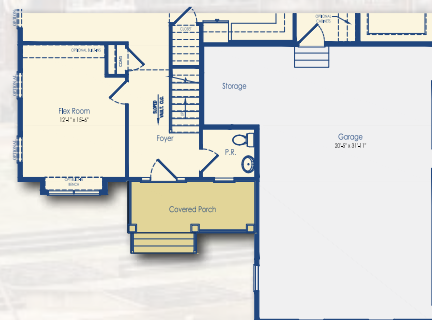
*\*Floor plan dimensions are approximate. Floor plans have an extensive list of structural options for further personalization.*



FIRST FLOOR  
Included Elevation A



SECOND FLOOR  
Included Elevation A



A 3-Car Side Load Garage is required  
at The Reserve at Horn Springs





Scan me  
for pricing  
and incentives



Optional Elevation D

# The Brady

Beds: 4 - 7 | Baths: 2.5 - 5.5

Heated Sqft: 3,018 - 5,207 | Total Sqft: 4,212 - 6,735

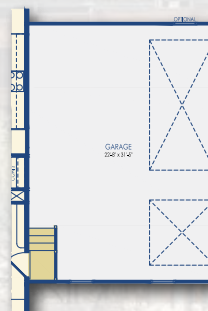
*\*Floor plan dimensions are approximate. Floor plans have an extensive list of structural options for further personalization.*



FIRST FLOOR  
Standard Plan



SECOND FLOOR  
Standard Plan



A 3-Car Side Load Garage is required  
at The Reserve at Horn Springs





Optional Craftsman Elevation



Scan me  
for pricing  
and incentives

# The Shearwater

Beds: 3 - 6 | Baths: 2.5 - 6 |

Heated Sqft: 3,020 - 6,280 | Total Sqft: 3,990 - 8,082

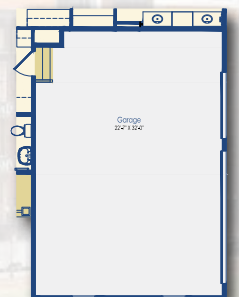
*\*Floor plan dimensions are approximate. Floor plans have an extensive list of structural options for further personalization.*



FIRST FLOOR  
Standard Plan



SECOND FLOOR  
Standard Plan



A 3-Car Side Load Garage is  
required at The Reserve at Horn  
Springs





Scan me  
for pricing  
and incentives



Optional Elevation D

# The Chesapeake

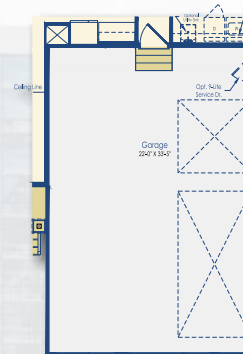
Beds: 4 - 7 | Baths: 3 - 6.5

Heated Sqft: 3,383 - 7,004 | Total Sqft: 4,430 - 9,648

*\*Floor plan dimensions are approximate. Floor plans have an extensive list of structural options for further personalization.*



FIRST FLOOR  
Included Elevation A



A 3-Car Side Load Garage is required  
at The Reserve at Horn Springs



SECOND FLOOR  
Included Elevation A





Optional Southern Elevation



Scan me  
for pricing  
and incentives

# The Waterford

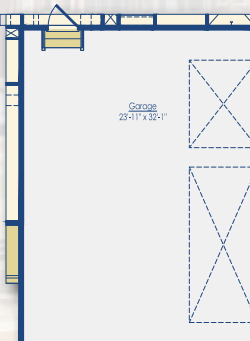
Beds: 4 - 8 | Baths: 3.5 - 7.5 |  
Heated Sqft: 3,642 - 7,495 | Total Sqft: 4,810 - 9,521

*\*Floor plan dimensions are approximate. Floor plans have an extensive list of structural options for further personalization.*



FIRST FLOOR  
Standard Plan

SECOND FLOOR  
Standard Plan



A 3-Car Side Load Garage is required  
at The Reserve at Horn Springs



Want more information?  
For more information visit [schellbrothers.com](https://schellbrothers.com) or  
contact our Sales Team!



Louis Holstein  
(615) 912-0980  
[louis.holstein@schellbrothers.com](mailto:louis.holstein@schellbrothers.com)

“Not only is Schell Brothers a first-rate home construction company but it is also a great place to work as is evident by everyone we interacted with. And it’s a business who is committed to our community.”

- Douglas & Jenny Kleintop



Scan me  
for more info on  
The Reserve at  
Horn Springs

© 2022 Schell Brothers LLC. All Rights Reserved. Renderings are an artist's conception and are for illustrative purposes only. Floor plans have an extensive list of structural options for further personalization. All information is subject to change without notice. Updated 11.22.22

