



Oak Hall IV

GET TO KNOW OAK HALL IV!

Why Oak Hall IV?

Ideally located in the heart of Mount Juliet, Oak Hall IV is 11 miles from the airport and 17 miles to downtown Nashville. Hop on the commuter train to ride in to the city for happy hour or enjoy summer BBQs with your friendly neighbors - Oak Hall IV is the ideal location for a vibrant social life. Oak Hall IV is also serviced by the Wilson County School District which is one of the top 100 schools in the state.

How many homes are in Oak Hall IV?

There are 23 homesites in Oak Hall IV.

How big are the homesites?

Homesites range from 0.23 to 0.59 acres.

What type of floor plans are offered at Oak Hall IV?

Oak Hall IV offers a variety of single-family floor plans ranging from 1,866 heated sqft up to 5,000+ heated sqft based on personalized selections. Each home offers something a little different, whether you're looking for a first floor or second floor primary suite, a tech nook for kids to do their homework at, or a place to entertain friends & family, we have the right home to fit your needs.

What's included in the HOA benefits & what are the fees?

Oak Hall IV HOA dues are \$190/quarter and includes common space maintenance, gated entrance maintenance, and trash service.

What is the heat/energy source?

This is a natural gas community.

Who are the utility companies?

Water/Sewer: West Wilson Utility District

Electric: Middle Tennessee Electric Membership Corporation (MTEMC)

Gas: Piedmont Natural Gas

Cable/Internet: Xfinity

What school district is Oak Hall IV located in?

Oak Hall IV is located in the Wilson County School District. The schools that service this community are Elzie D. Patton Elementary, West Wilson Middle School, and Mt Juliet High School.

Oak Hall IV



Available Homesites
 Sold
 Model / Future Models
 Quick Move In Home
 Unavailable Homesites

#135 \$20,000

#139 \$0

#140 \$10,000

#145 \$2,500

#146 \$7,500

#149 \$0

#150 \$0



Scan me
for pricing
and incentives

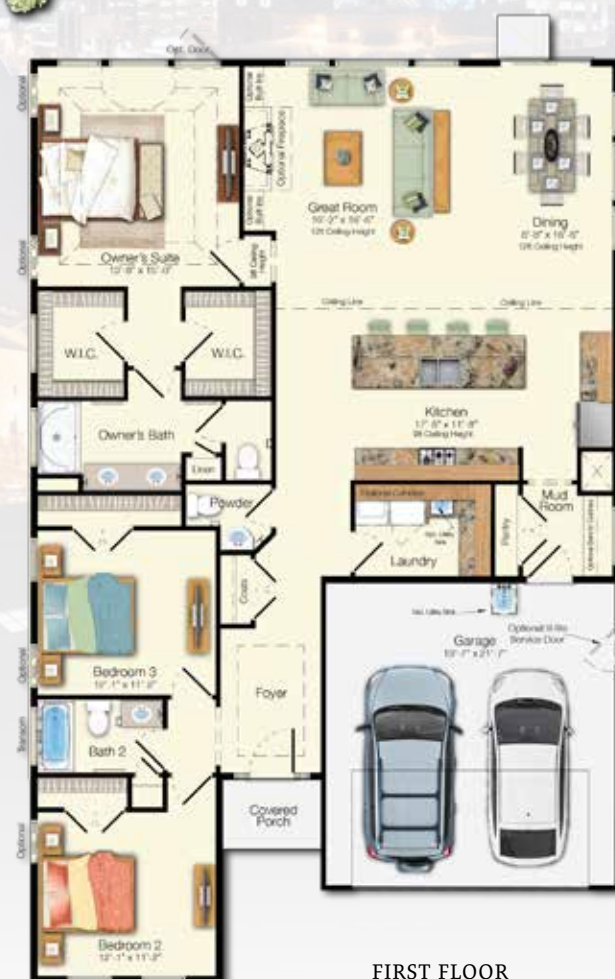


Elevation A

The Monterey

Beds: 3 - 6 | Baths: 2.5 - 4 |
Heated Sqft: 1,866 - 5,560 | Total Sqft: 2,315 - 6,584

**Floor plan dimensions are approximate. Floor plans have an extensive list of structural options for further personalization.*



FIRST FLOOR
Included Elevation A



Scan me
for pricing
and incentives

The Whimbrel

Beds: 3 - 6 | Baths: 2 - 4
Heated Sqft: 1,971 - 5,204 | Total Sqft: 2,544 - 6,812

**Floor plan dimensions are approximate. Floor plans have an extensive list of structural options for further personalization.*



FIRST FLOOR
Included Elevation A



Scan me
for pricing
and incentives



Optional Elevation B

The Stonefield

Beds: 3 - 6 | Baths: 3 - 6 |
Heated Sqft: 2,082 - 4,819 | Total Sqft: 2,543 - 6,723

**Floor plan dimensions are approximate. Floor plans have an extensive list of structural options for further personalization.*



FIRST FLOOR
Included Elevation A



Optional Craftsman Elevation



Scan me
for pricing
and incentives

The Hadley

Beds: 3 - 6 | Baths: 2.5 - 4.5 |
Heated Sqft: 2,358 - 4,587 | Total Sqft: 3,189 - 6,347

**Floor plan dimensions are approximate. Floor plans have an extensive list of structural options for further personalization.*



FIRST FLOOR
Included Elevation A



SECOND FLOOR
Included Elevation A



Scan me
for pricing
and incentives



Included Farmhouse Elevation

The Camellia

Beds: 3 - 6 | Baths: 2 - 5

Heated Sqft: 2,490 - 4,803 | Total Sqft: (3,083 - 6,000)

**Floor plan dimensions are approximate. Floor plans have an extensive list of structural options for further personalization.*



FIRST FLOOR
Standard Floor Plan



SECOND FLOOR
Standard Floor Plan



Scan me
for pricing
and incentives

The Kingfisher

Beds: 3 - 7 | Baths: 2.5 - 7 |
Heated Sqft: 2,566 - 5,750 | Total Sqft: 3,531 - 7,514

**Floor plan dimensions are approximate. Floor plans have an extensive list of structural options for further personalization.*



FIRST FLOOR
Included Elevation A

SECOND FLOOR
Included Elevation A



Scan me
for pricing
and incentives



Included Craftsman Elevation

The Southport

Beds: 4 - 6 | Baths: 2.5 - 5 |
Heated Sqft: 2,720 - 5,201 | Total Sqft: 3,554 - 6,550

**Floor plan dimensions are approximate. Floor plans have an extensive list of structural options for further personalization.*



FIRST FLOOR
Standard Floor Plan



SECOND FLOOR
Standard Floor Plan



Optional Craftsman Elevation



Scan me
for pricing
and incentives

The Shearwater

Beds: 3 - 6 | Baths: 2.5 - 6 |
Heated Sqft: 3,020 - 6,280 | Total Sqft: 3,990 - 8,082

**Floor plan dimensions are approximate. Floor plans have an extensive list of structural options for further personalization.*



FIRST FLOOR
Standard Floor Plan



SECOND FLOOR
Standard Floor Plan

Want more information?
For more information visit schellbrothers.com or
contact our Sales Team!



Louis Holstein
(615) 912-0980
louis.holstein@schellbrothers.com

“Not only is Schell Brothers a first-rate home construction company but it is also a great place to work as is evident by everyone we interacted with. And it’s a business who is committed to our community.”

- Douglas & Jenny Kleintop



Scan me
for more info on
OakHall IV

© 2023 Schell Brothers LLC. All Rights Reserved. Renderings are an artist's conception and are for illustrative purposes only. Floor plans have an extensive list of structural options for further personalization. All information is subject to change without notice. Updated 3.31.23

