



*Mosaic*

AT WEST CREEK | BY HHHUNT



# GET TO KNOW MOSAIC AT WEST CREEK!

## **Why Mosaic at West Creek?**

Every day feels like a vacation at Mosaic at West Creek. One of the area's few 55 and better, low-maintenance communities, offering resort-inspired amenities designed for the way you live. At Mosaic, you'll be able to start your day by challenging neighbors to a friendly pickleball game, relaxing by the outdoor pool in the afternoon, and enjoying an evening with friends at The Conservatory. Even better, Mosaic offers easy access to major highways and is close to the area's shopping, restaurants, and a variety of recreational activities. Every day brings the fun at Mosaic at West Creek.

## **What amenities are offered?**

Mosaic at West Creek will offer a state-of-the-art community clubhouse with multi-use sport courts and an outdoor pool. Future amenities also include The Conservatory - an indoor/outdoor entertaining space where you can use the outdoor kitchen and gather around the fire pit for some s'mores with neighbors and friends.

## **What type of floor plans are offered at Mosaic at West Creek?**

Mosaic at West Creek offers a variety of floor plans including ranch and two-story homes. Options available to personalize floor plans with additional bedrooms and bathrooms, living area extensions, luxury owner's suites, finished basements, screen porches, multi-level courtyards, and much more.

## **What is included in the HOA?**

HOA fees are \$297 per month and include access to future community amenities, common area maintenance and landscaping, gutter cleaning, power washing, lawn maintenance and irrigation.

## **What are the utility companies?**

Gas: Natural Gas  
Electric: Dominion Power  
Phone/Cable: Comcast











**SCAN ME**  
for pricing  
and incentives.

Optional Modern Farmhouse Elevation

# The Camden

Beds: 2 - 3 | Baths: 2 - 3 |  
Heated Sqft: 1,411 - 2,851 | Total Sqft: 1,875 - 3,694

*\*Floor plan dimensions are approximate. Floor plans have an extensive list of structural options for further personalization.*



FIRST FLOOR



**SCAN ME**  
for pricing  
and incentives.



Optional Elevation E

# The Montauk

Beds: 3 - 5 | Baths: 2 - 4 |  
Heated Sqft: 1,661 - 4,104 | Total Sqft: 2,112 - 5,662

*\*Floor plan dimensions are approximate. Floor plans have an extensive list of structural options for further personalization.*



FIRST FLOOR  
Included Elevation A





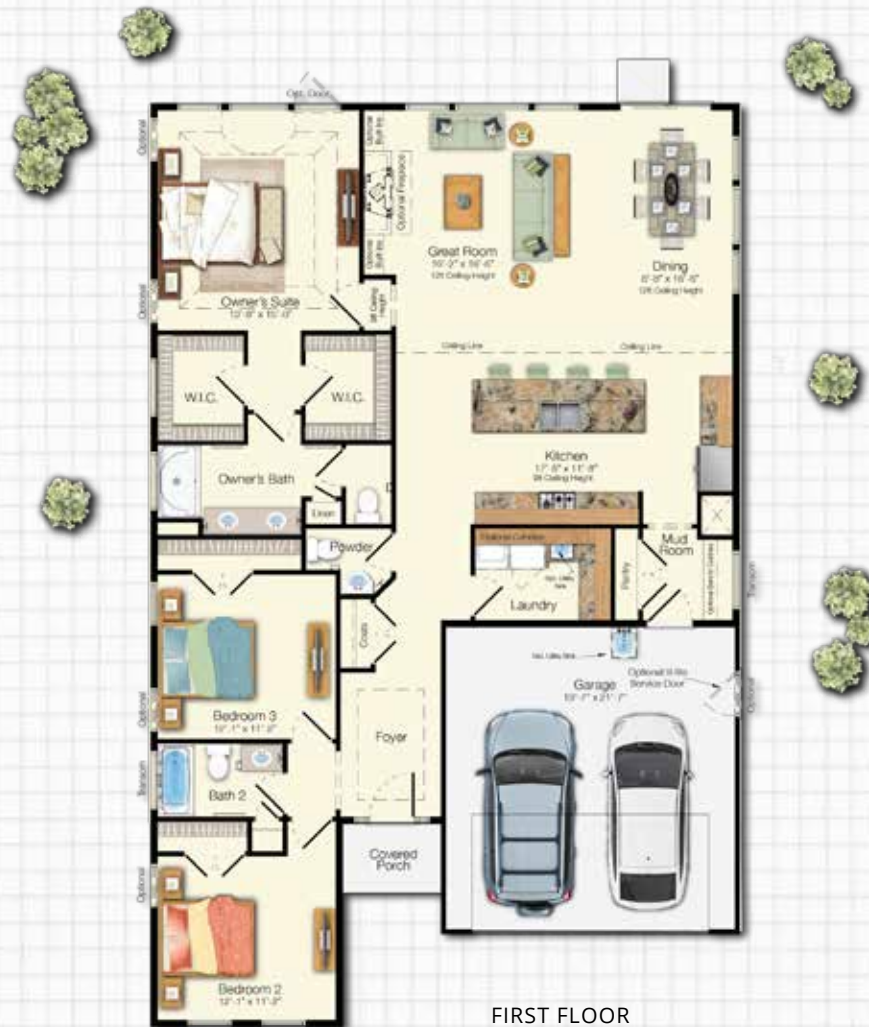
**SCAN ME**  
for pricing  
and incentives.

Optional Craftsman Elevation

# The Monterey

Beds: 3 - 6 | Baths: 2 - 4 |  
Heated Sqft: 1,866 - 5,061 | Total Sqft: 2,315 - 5,852

*\*Floor plan dimensions are approximate. Floor plans have an extensive list of structural options for further personalization.*





SCAN ME  
for pricing  
and incentives.



Optional Elevation B

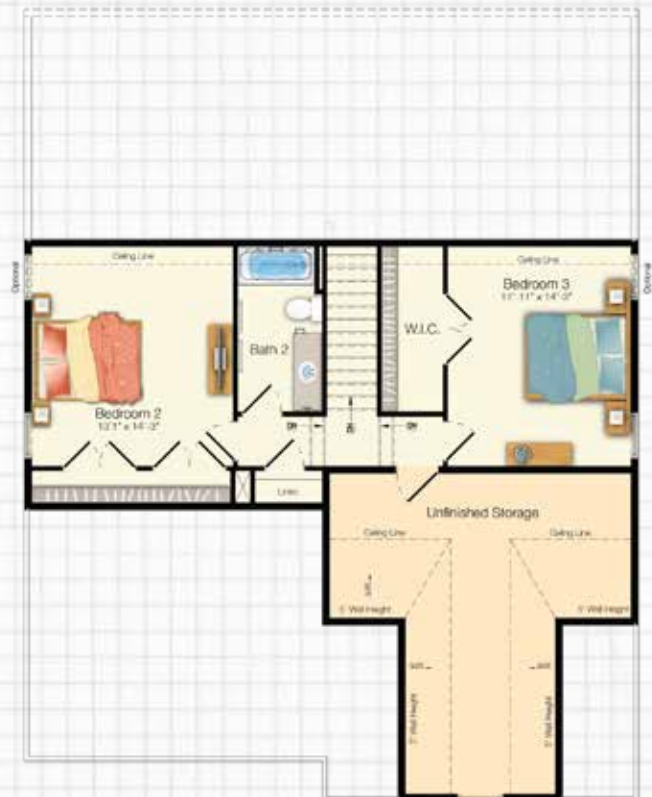
# The Saybrook

Beds: 3 - 6 | Baths: 2.5 - 5 |  
Heated Sqft: 2,192 - 4,490 | Total Sqft: 2,976 - 5,847

*\*Floor plan dimensions are approximate. Floor plans have an extensive list of structural options for further personalization.*



FIRST FLOOR



SECOND FLOOR





**SCAN ME**  
for pricing  
and incentives.

# The Stonefield

Beds: 3 - 6 | Baths: 3 - 6 |  
Heated Sqft: 2,082 - 4,819 | Total Sqft: 2,543 - 6,723

*\*Floor plan dimensions are approximate. Floor plans have an extensive list of structural options for further personalization.*



FIRST FLOOR





**SCAN ME**  
for pricing  
and incentives.

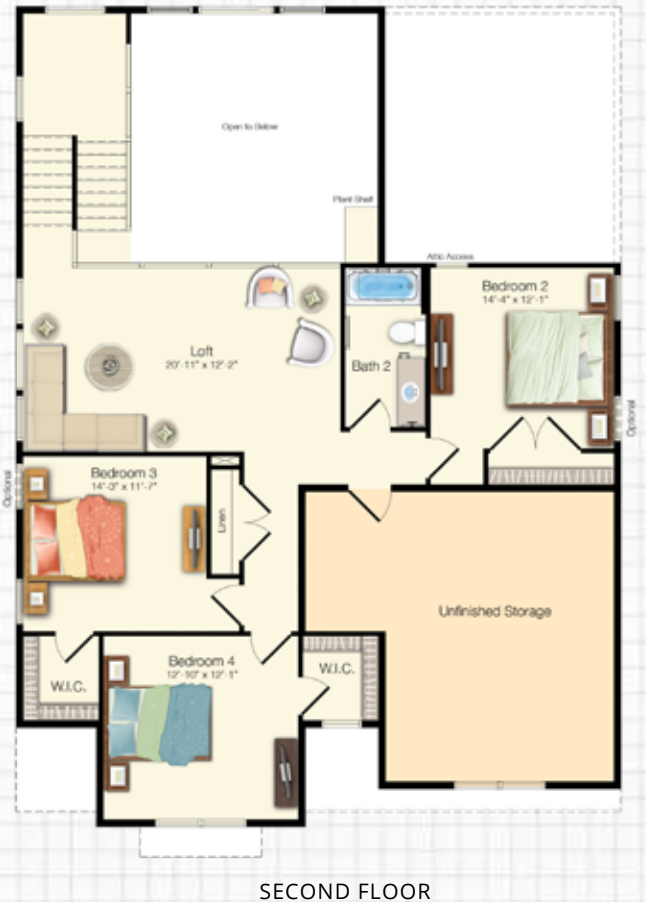


Optional Elevation D

# The Southport

Beds: 4 - 6 | Baths: 3 - 4 |  
Heated Sqft: 2,720 - 5,210 | Total Sqft: 3,554 - 6,550

*\*Floor plan dimensions are approximate. Floor plans have an extensive list of structural options for further personalization.*





## HOMESITE PREMIUMS

#3-7 \$20,000

#23-7 \$15,000

#24-7 \$15,000



#MYMOSAIC



**1. THE CONSERVATORY** INDOOR/OUTDOOR GATHERING SPOT WITH GARDENS, A FIRE PIT AND OUTDOOR KITCHEN.



**2. THE BARK PARK**



**3. THE CONNEXION** STATE-OF-THE-ART CLUBHOUSE WITH RESORT-STYLE POOL, MULTI-PURPOSE SPORTS COURTS, OUTDOOR KITCHEN, FIRE PIT, HOT TUB, INDOOR FITNESS FACILITY AND MORE!



**OUTDOOR FIRE PIT**



**RESORT-STYLE POOL**



**MULTI-USE SPORTS COURTS**



**INDOOR FITNESS FACILITY**  
LOCATED IN THE CONNEXION



**MAIL CENTERS**  
CONVENIENTLY LOCATED THROUGHOUT THE COMMUNITY



**WALKING TRAILS** ———



**SIDEWALKS** ———



**BOARDWALK** .....



## EXPLORE THE PIECES OF MOSAIC

It takes artistry and a unique vision to create a masterpiece. Here's a closer look at life at Mosaic and the pieces that bring this vibrant community together.



Visit [schellbrothers.com](https://schellbrothers.com) or contact our Sales Team for more information!



**ZACH CAUDILL**  
**(804) 215-4182**  
**[zach.caudill@schellbrothers.com](mailto:zach.caudill@schellbrothers.com)**

“Not only is Schell Brothers a first-rate home construction company but it is also a great place to work as is evident by everyone we interacted with. And it’s a business who is committed to our community.”

- Douglas & Jenny Kleintop



Scan me  
for more info on  
Mosaic at  
West Creek

© 2022 Schell Brothers LLC. All Rights Reserved. Renderings are an artist's conception and are for illustrative purposes only. Floor plans have an extensive list of structural options for further personalization. All information is subject to change without notice. Updated 12.13.23

