

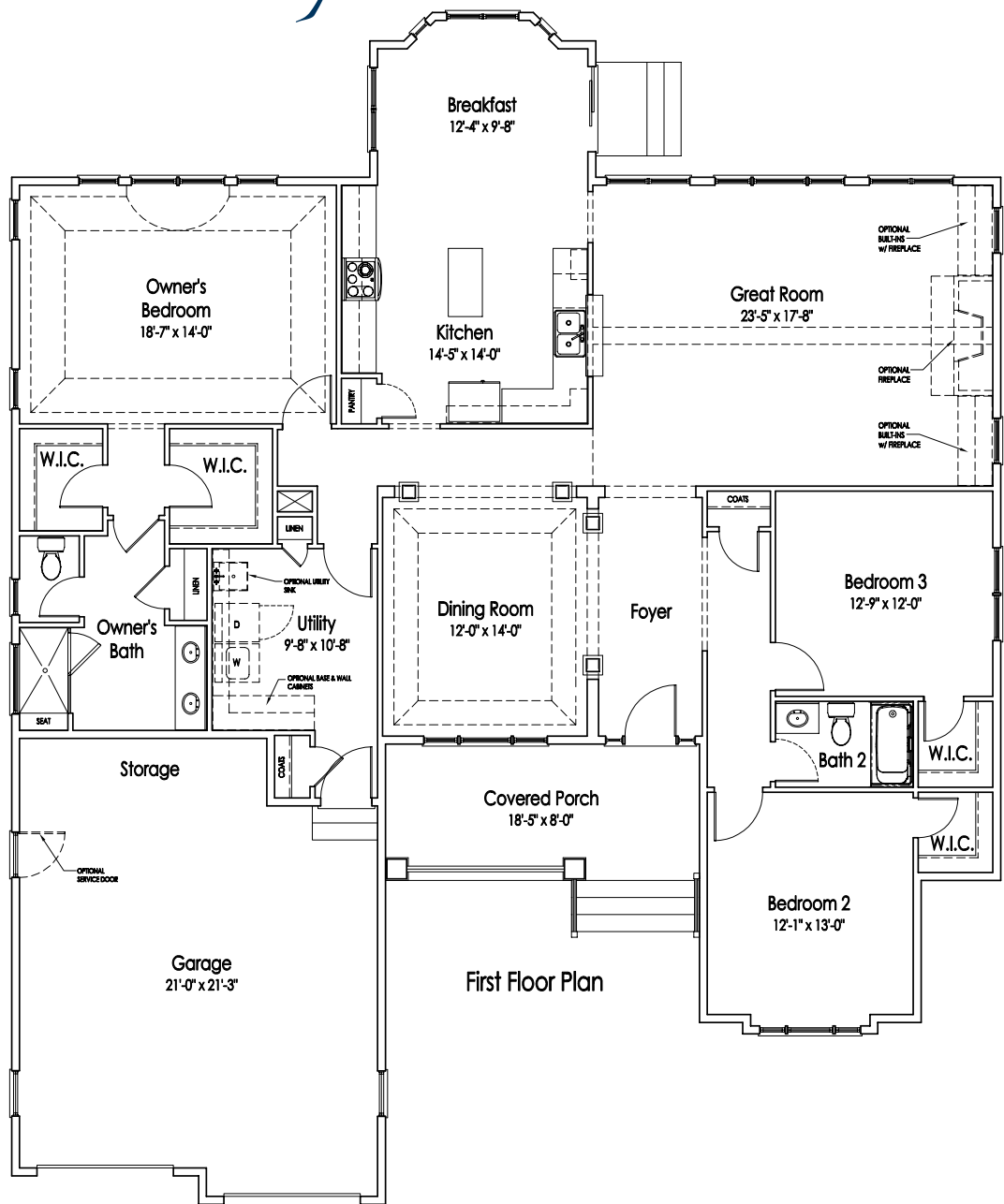
# *The Mariner*



## *Bay Series*

V1.0 Bay Series - 3.4.10 / Rendering is Artist's Conception

# Standard Floorplan



## The Mariner

Beds	3
Baths	2
Heated Sq. Ft.	2318 - 2572

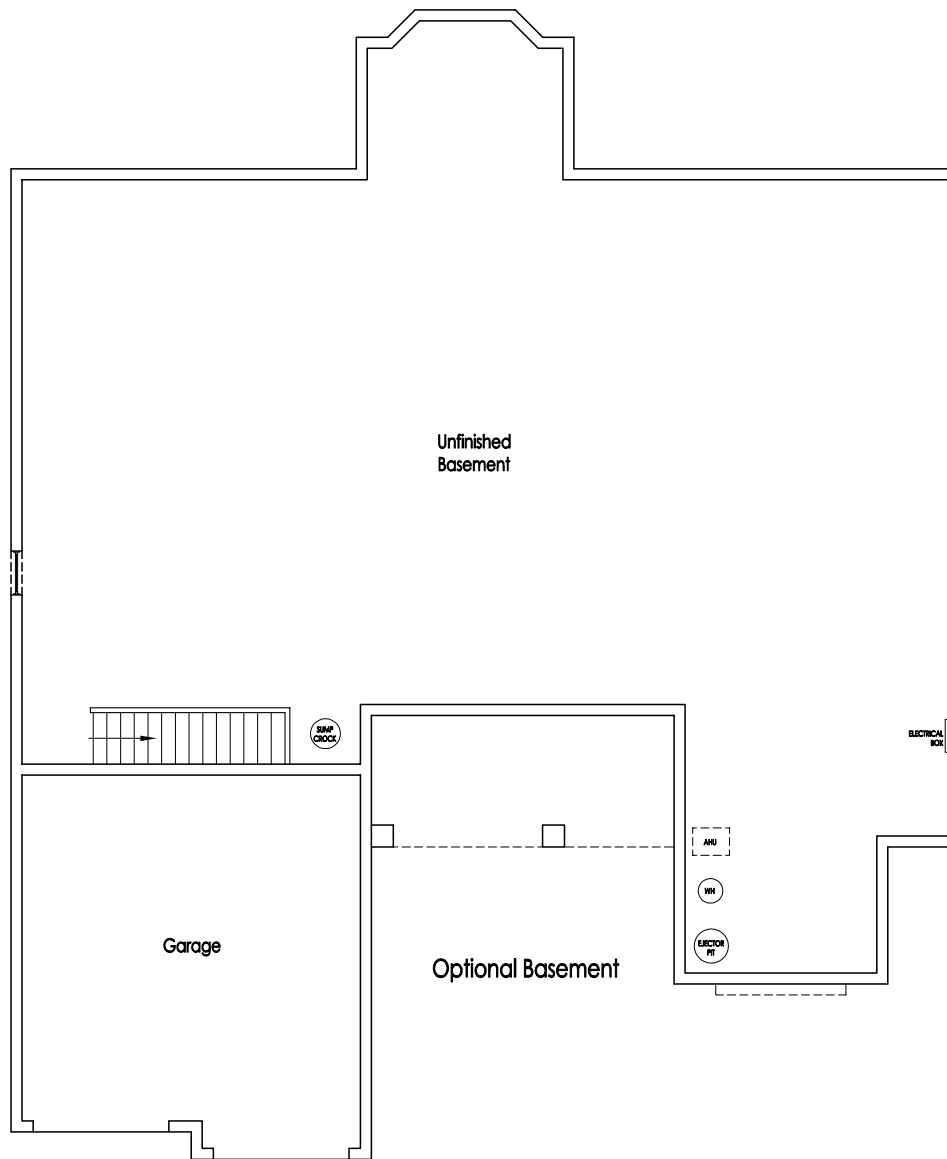
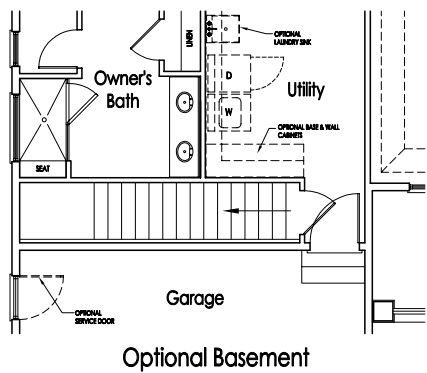
### Structural Options

Ext. Breakfast Nook	+27
Basement (Stairs)	+59
Ext. Owner's Bedroom	+168

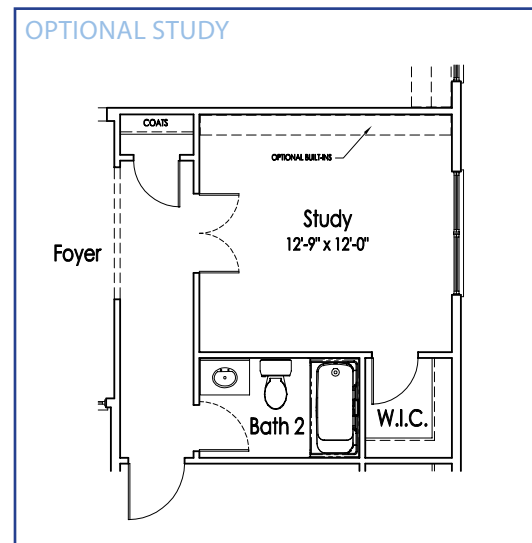
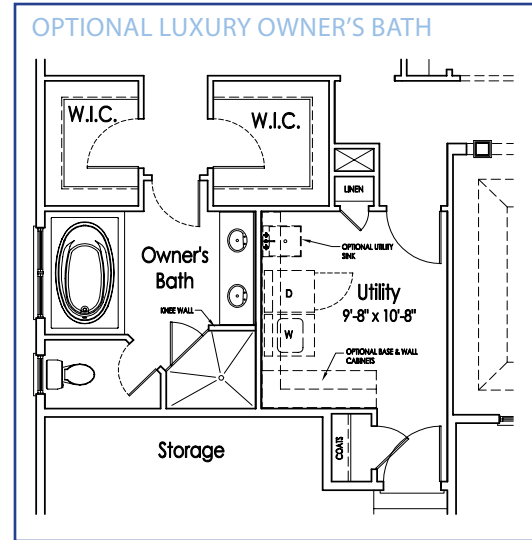
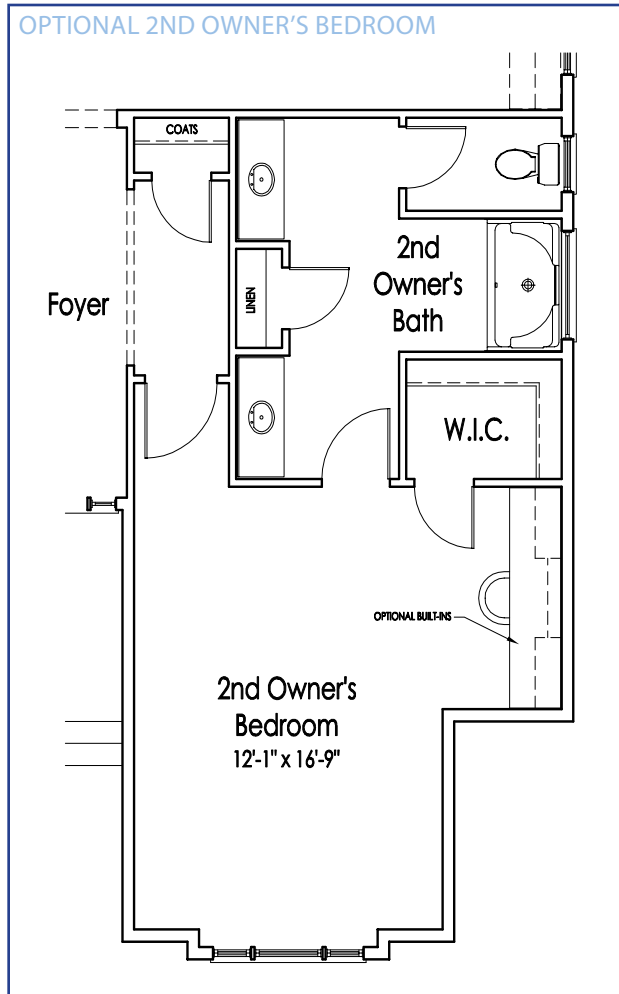
\* Floor plan dimensions are approximate.

# Structural Options

## OPTIONAL BASEMENT

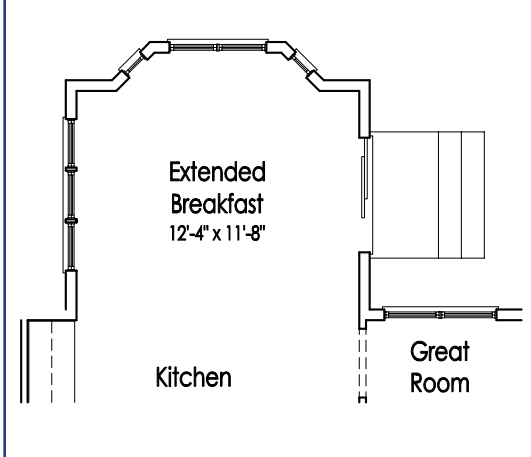


# Structural Options

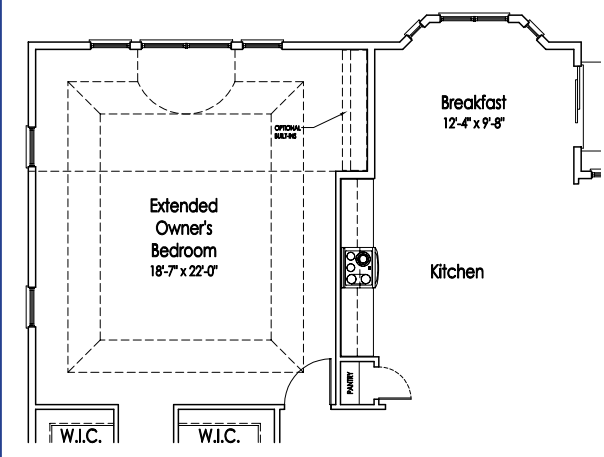


# Structural Options

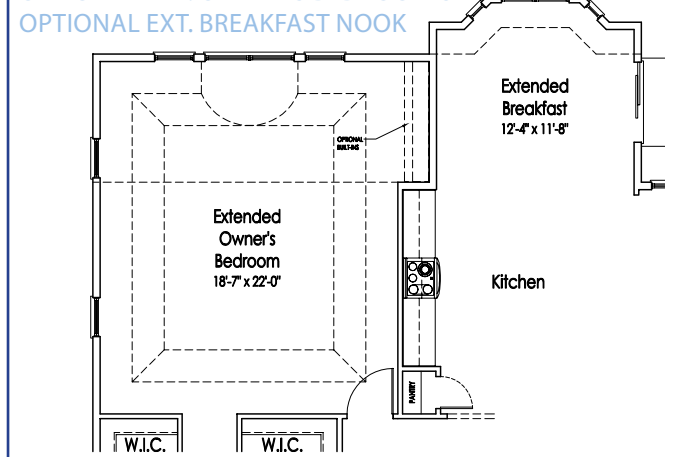
OPTIONAL EXT. BREAKFAST NOOK



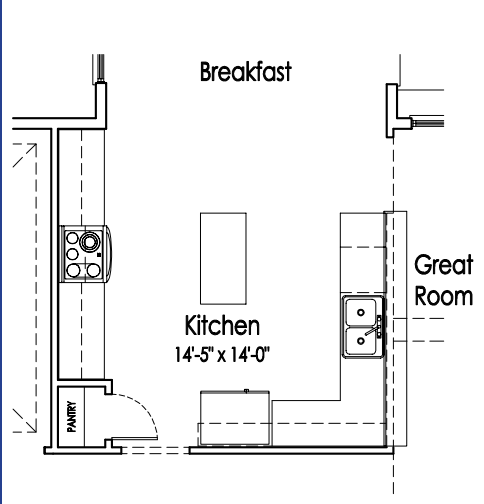
OPTIONAL EXT. OWNER'S BEDROOM



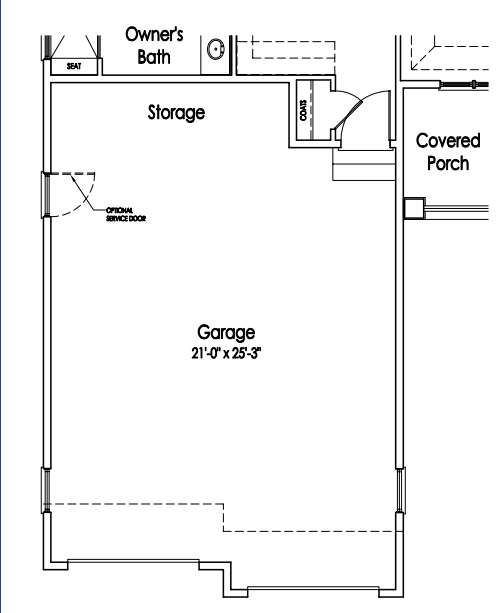
OPTIONAL EXT. OWNER'S BEDROOM & OPTIONAL EXT. BREAKFAST NOOK



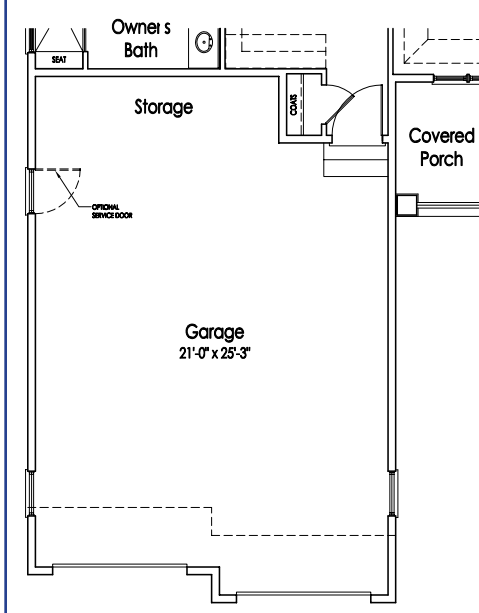
OPTIONAL OPEN KITCHEN



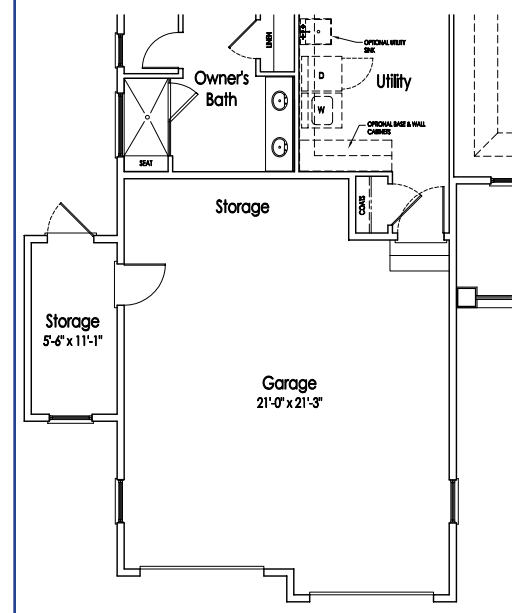
OPTIONAL 4' - 0" GARAGE EXT.



OPTIONAL 4' - 0" EXT. SIDE LOAD GARAGE

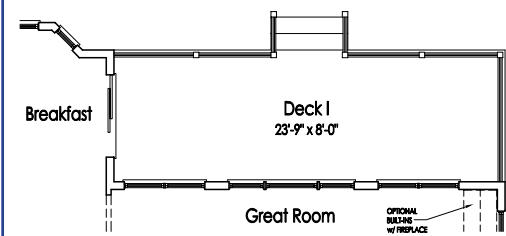


OPTIONAL EXTERIOR GARAGE STORAGE



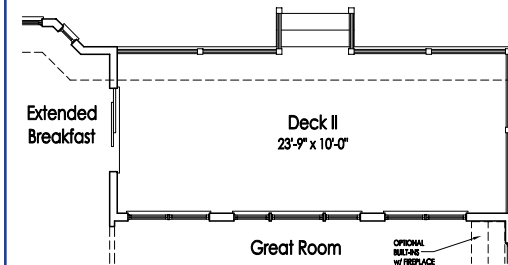
# Structural Options

OPTIONAL DECK I

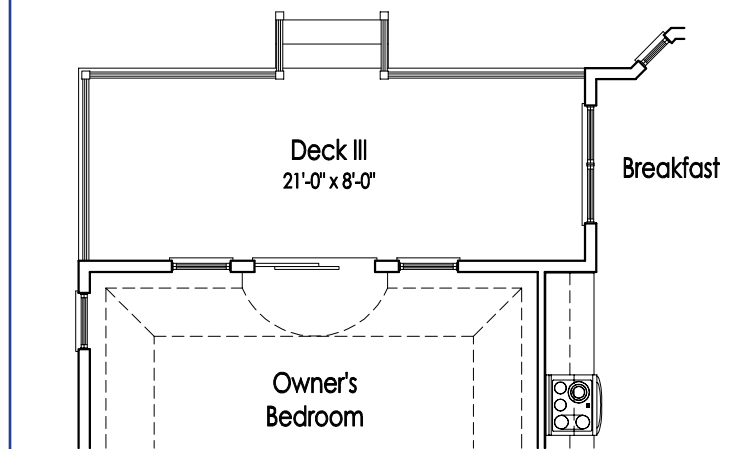


OPTIONAL DECK II

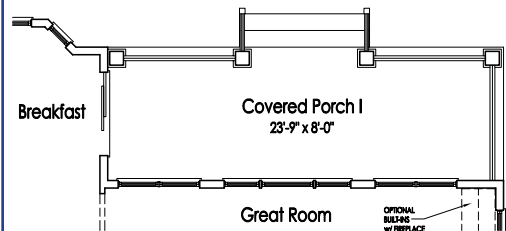
ONLY AVAILABLE W/ EXT. BREAKFAST NOOK



OPTIONAL DECK III

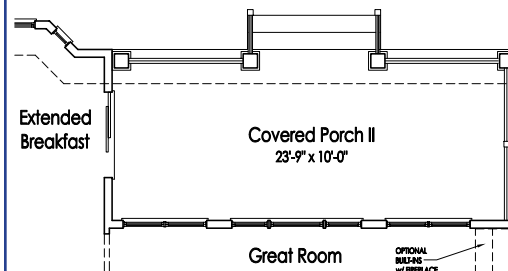


OPTIONAL COVERED PORCH I



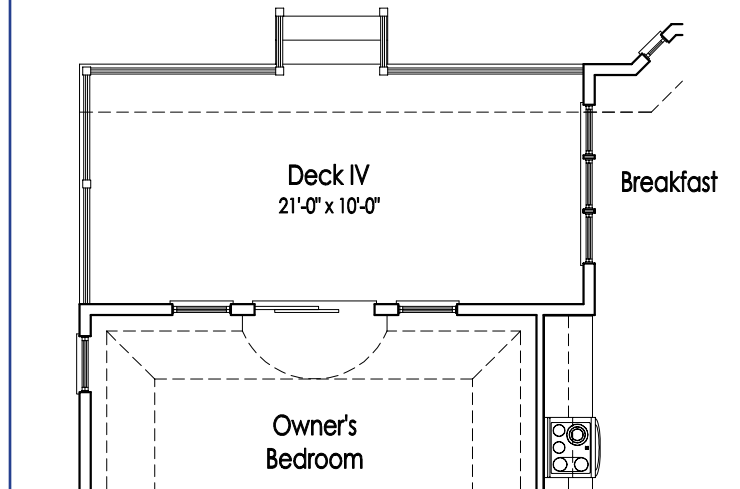
OPTIONAL COVERED PORCH II

ONLY AVAILABLE W/ EXT. BREAKFAST NOOK

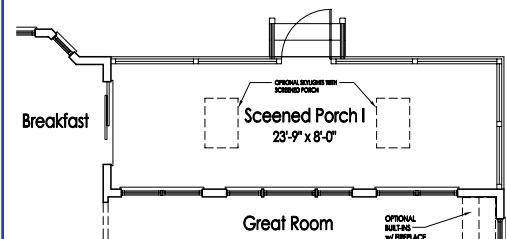


OPTIONAL DECK IV

ONLY AVAILABLE W/ EXT. BREAKFAST NOOK

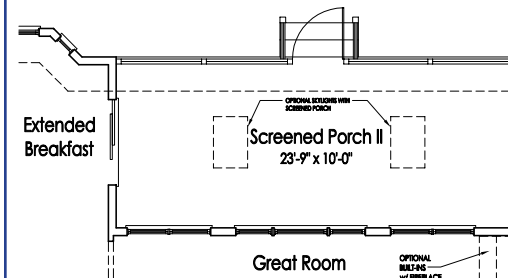


OPTIONAL SCREENED PORCH I



OPTIONAL SCREENED PORCH II

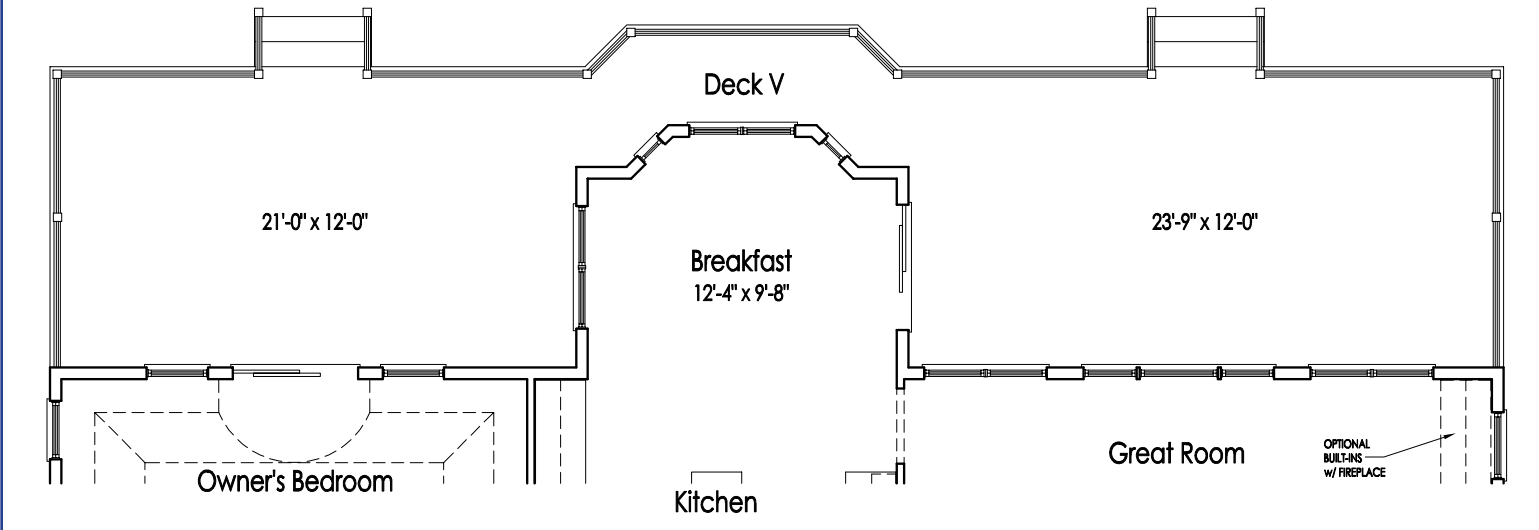
ONLY AVAILABLE W/ EXT. BREAKFAST NOOK



# Structural Options

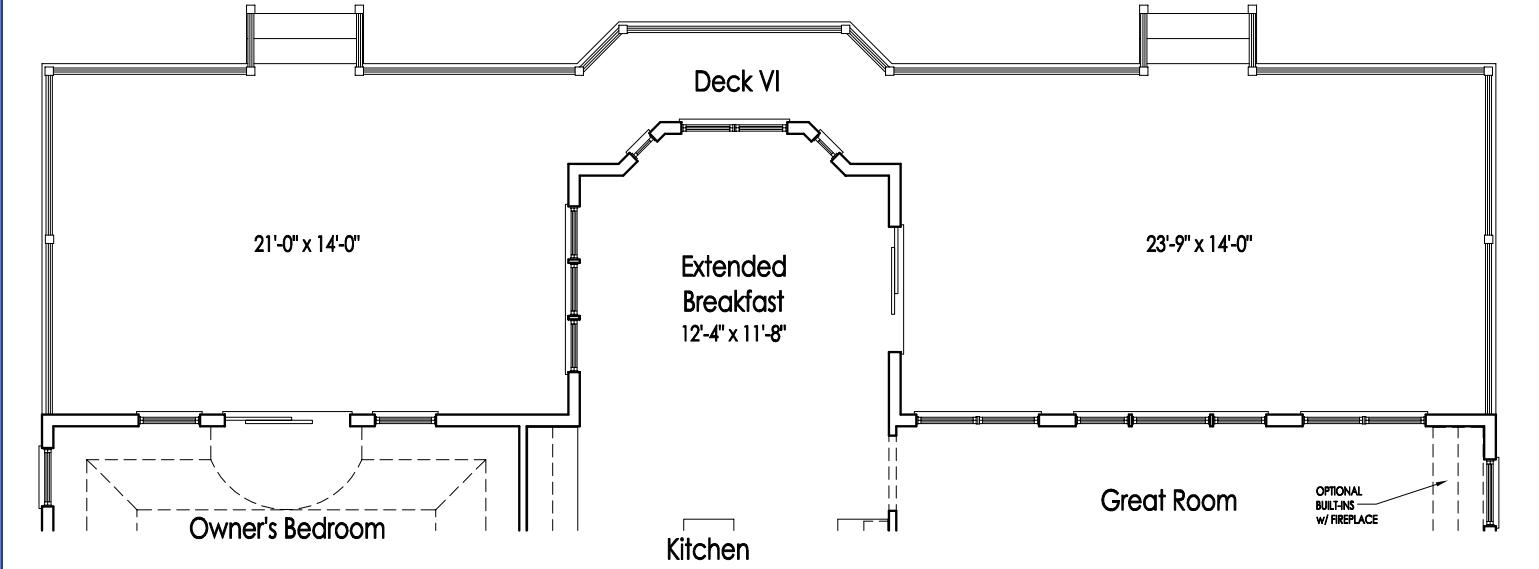
## OPTIONAL DECK V

ONLY AVAILABLE W/ STANDARD PLAN



## OPTIONAL DECK VI

ONLY AVAILABLE W/ EXT. BREAKFAST NOOK





## Our Mission:

*To bring happiness to ourselves and our homeowners by not only creating exceptional homes and communities but also providing an extraordinary home buying experience.*

