

The Vineyards at Nassau Valley
Selections Guide
*another exceptional project built by
Schell Brothers*

1.19.10

Printed colors may vary from actual materials
Selections and Option are subject to change without notice.

The Vineyards at Nassau Valley Customer Selection Guide V1.0 .



THE
VINEYARDS

at Nassau Valley





THE VINEYARDS *at Nassau Valley*



Welcome

A new urban community with elegance and charm, The Vineyards at Nassau Valley embraces an exclusive style for its village dwellers, retailers and business professionals. Our homes will feature a myriad of floorplans with an enduring emphasis on the natural beauty of the surroundings, complemented with each homeowner's unique style incorporated in their interior selections. Accents like romantic verandas and arched trellises add a certain nostalgia to the modern comfort and convenience found just outside each door. The possibilities are endless here at The Vineyards...



Contents



Look for this symbol throughout for universal design finishes



Look for this symbol throughout for standard finishes



Cabinetry 6 - 9

Hardware 10

Countertops 11 - 15

- Laminate 11
- Granite 12
- Silestone 13
- Corian 14
- Vanity tops 15

Plumbing 16 - 19

- Kitchen Sinks 16 - 17
- Kitchen Faucets 18
- Bathroom Fixtures 19 - 21

Wet Bar 22

Lighting Fixtures 23

Flooring 24 - 26

- Vinyl 24
- Carpet 24
- Tile 25
- Hardwood 26

Interior Finishes 27 - 31

- Wall Tile 27 - 28
- Moulding & Paint 29
- Fireplaces, Mantels & Surrounds 30 - 31

Appliances 32 - 43

- Refrigerators 32 - 34
- Ranges 35 - 37
- Microwaves 38 - 39
- Dishwashers 40 - 41
- Washers & Dryers 42 - 4

General Information 45

Wellborn Cabinets

The Select Series

WellShield natural maple laminated interior.

Exterior finished with a 24-step WellGuard finishing system for a furniture-like luster and years of beauty.



1 3/4" x 3/4" Kiln-dried, solid wood face frames.

Solid wood doors attached with WellLine adjustable hinges.

The Premier Series

WellShield natural maple laminated interior.

Exterior finished with a 24-step WellGuard finishing system for a furniture-like luster and years of beauty.



Solid wood drawer fronts. 3/4" Solid maple dovetail drawers in natural finish w/ plywood bottom & smooth undermount drawer slides. These are the strongest drawers in the industry.

Solid wood doors attached with WellLine hinges for 4-way adjustability.

The Select Series

Tier I

Arlington Oak



Square

Arlington Oak



Arch

Tier II

Arlington Maple



Square

Arlington Maple



Arch

Tier III

Imperial



Tier IV

Harmony Maple



Harvest Oak



Square

Harvest Oak



Arch

Tier V

Harvest Maple



Square

Harvest Maple



Arch

Tier VI

Harmony Cherry



Harvest Cherry



Square

Harvest Cherry



Arch

Prairie Maple



The Premier Series

Tier VII

Essex Oak



Tier VIII

Essex Maple



Tier IV

Rose Hall Oak



Rose Hall Oak



Rose Hall Oak



CABINETRY

The Vineyards at Nassau Valley Customer Selection Guide V1.0

WELLBORN
CABINET, INC.
The Essence of Cabinetry

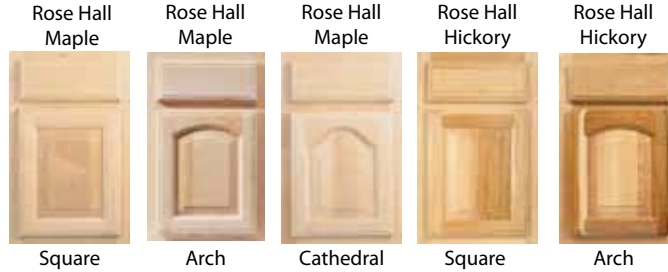
Wellborn Cabinets

The Premier Series

Tier X



Tier XI



Tier XII



Tier XIII



Tier XIV



Tier XV



Tier XVI



Tier XVII



Tier XVIII



Cabinet Finishes

Standard Cherry Finishes*



Specialty Cherry Finishes



Standard Maple Finishes*



Specialty Maple Finishes



Standard Oak Finishes*



Specialty Oak Finishes



Cabinet Finishes



Standard Hickory Finishes*



Specialty Hickory Finishes



Standard Thermofoil Finishes



For over 45 years, Wellborn Cabinet Inc. has been manufacturing kitchen and bath cabinetry. Their goal is to provide products that are crafted with the utmost quality and care, products that they are proud to build and products that you will be proud to own.

Wellborn Cabinet, Inc., is a family business that was established in 1961. Years of individual dedication by hundreds of Wellborn employees has created today's multifaceted company. Located in the foothills and timber country of the Appalachian Mountains in Ashland, Alabama, Wellborn Cabinet, Inc., now encompasses over 1.5 million square feet and integrally operates its own timber processing mill.

Hardware



Standard Cabinet Hardware



3910 PC



Z259-3 PC



3910 SN



Z259-3 SN



3910 BK



Z259-3 BK

Cabinet Hardware Upgrade Options



3991 SN



8233 SN



409223 SN



3991 DACM



8233 DACM



413321



618 BNMDL



718 BNMDL



178 SN



618 DACM



718 DACM

**Cabinet hardware model 8233 available only in select cabinet styles*



Interior Door Hardware



Torino Lever

Satin Nickel
Universal Design Standard



HARDWARE

Laminate

Kitchen Countertops

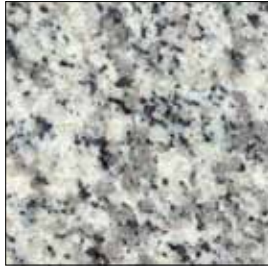
Square Edge Laminate
Available in over 100 colors



Granite



Tier I



Luna Pearl



Tan Brown



New Caladonia



Santa Cecilia



Verde Butterfly

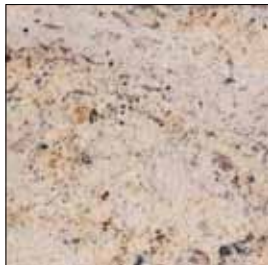


Andes Black



Ubatuba

Tier II



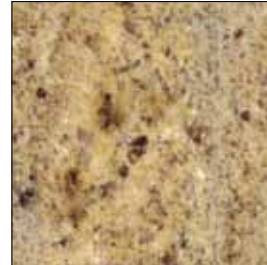
Shivikashi



Giallo Ornamental



Giallo Napoleon



Kashmir Gold



Saph. Blue/Brown



Black Absolute

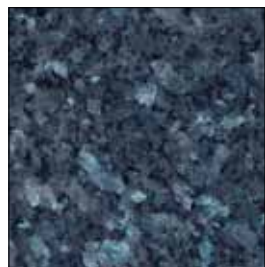


Rosewood

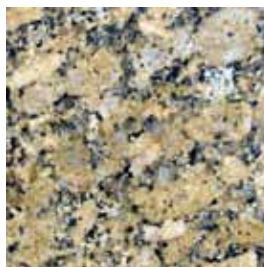
Tier III



Emerald Pearl



Blue Pearl



Giallo Fiorito



Dakota Mahogany

5 Standard Countertop Edges Available for Granite and Silestone

COUNTERTOPS

The Vineyards at Nassau Valley Customer Selection Guide V1.0



Silestone

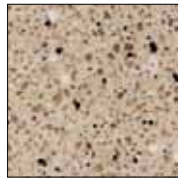
Tier I



Beige Olimpo



Coral Troya



Diana Pearl



Grey Expo

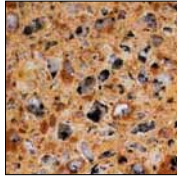


Minerva Cream

Tier II



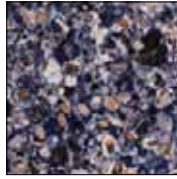
Absolute Green



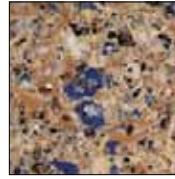
Amarillo Palmira



Amarillo Sand



Blue Safita



Blue Sahara



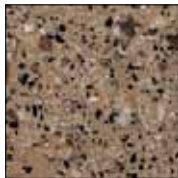
Brick Marte



Capri Limestone



Coffee Brown



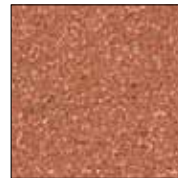
Kalahari



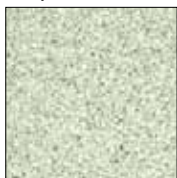
Kona Beige



Monte Blanc



Orange Fuego



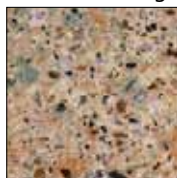
Verde Agua



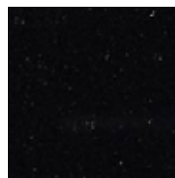
Rosa Grey



Silver Nube



Tea Leaf



Tebas Black



White North



White Dune

Tier III



Brazilian Brown



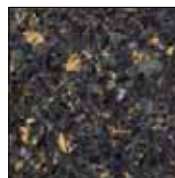
Ebony Pearl



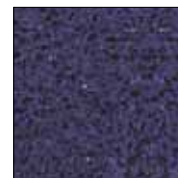
Ivory Coast



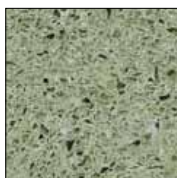
Mahogany



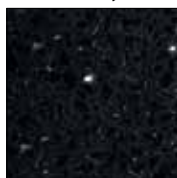
Rainforest



Stellar Marine



Stellar Meadow



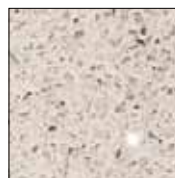
Stellar Night



Stellar Rose



Stellar Sky



Stellar Snow

5 Standard Countertop Edges Available for Granite and Silestone

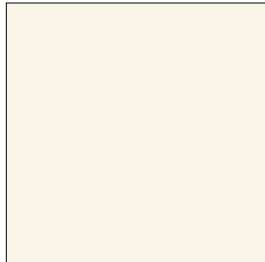
COUNTERTOPS

The Vineyards at Nassau Valley Customer Selection Guide V1.0.



DuPont™ Corian®

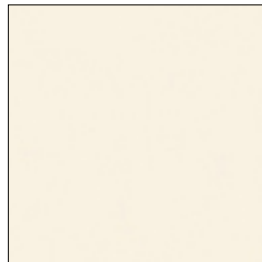
An advanced blend of natural materials and pure acrylic polymer, Corian® is a brand that has earned trust and respect as a proven material that brings design versatility, longterm performance and value to any environment.



Glacier White



Cameo White



Bisque



Mojave



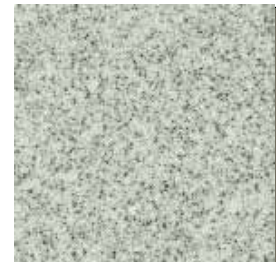
Sandstone



Moss



Moss



Dusk



Burnt Amber

Also available in Flint

Corian Edge



Pencil Edge



COUNTERTOPS

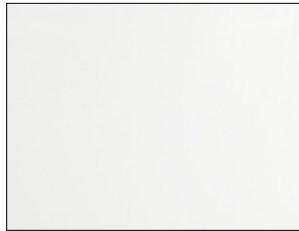
The Vineyards at Nassau Valley Customer Selection Guide V1.0

Vanity Tops

Virginia Marble Cultured Marble



102 Beige Vein/White



031 Bright White



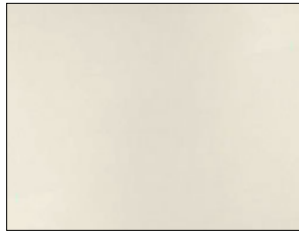
117 Country Gray/White



019 Natural Vein/White



191 Solid Innoc. Blush



517 Solid Kohler Biscuit



530 White/Kohler Biscuit



120 Classic Cream



101 White Vein/White



139 White/A.S. Bone



135 White/Kohler Bone



143 White/Light Gray

Single Bowl Kitchen Sinks



Elkay/Dayton

Stainless Steel Drop-In Sink
25" wide x 22" deep
8" bowl depth
D12522



Elkay/Dayton

Stainless Steel Undermount Sink
24" wide x 18" deep
8" bowl depth
DUH2115



Double Bowl Kitchen Sinks



Elkay/Dayton

Stainless Steel Drop-In Sink
32" wide x 22" deep
8" bowl depth
DSE233224



Enex

Stainless Steel Undermount Sink
32" wide x 18" deep
8" bowl depth
ED3108



Franke

Stainless Steel Undermount Sink
30" wide x 19" deep
9" bowl depth
RGX 160



Kohler Executive Chef™

A large, deep basin on the left with a slightly smaller, moderately deep basin on the right. Made of durable Kohler® Cast Iron and coated with acid resistant enamel, the Executive Chef provides ample workspace with elegant simplicity. Available in white and bisque.
33" wide x 22" deep
Large bowl: 9^{3/4}" bowl depth; Small bowl: 7^{3/4}"
K-5931-4U

Kitchen Faucets & Soap Dispenser



Kohler Coralais

Universal Design Standard Kitchen Faucet offered as standard in Polished chrome; Vibrant brushed nickel as an upgrade
K-15172-F



Kohler Coralais

without escutcheon
Standard Kitchen Faucet
with undermount sink upgrade only, available in Polished chrome only
K-15176-P



Kohler Forte

Upgraded Kitchen Faucet
In Polished chrome, Vibrant brushed nickel or Vibrant stainless
K-10433



Kohler Vinnata

Upgraded Kitchen Faucet
In Polished chrome, Vibrant brushed nickel or Vibrant stainless
K-690



Kohler Fairfax

Upgraded Kitchen Faucet
In Polished chrome or Vibrant brushed nickel
K-12176



Kohler Avatar

Upgraded Kitchen Faucet
In Polished chrome or Vibrant stainless
K-6350



Soap Dispenser

Upgrade option; in Polished chrome, Vibrant brushed nickel or Vibrant stainless
K-1895-C



PLUMBING

The Vineyards at Nassau Valley Customer Selection Guide V1.0

THE BOLD LOOK
OF **KOHLER**

Bathroom Fixtures



Coralais Faucet Collection

Offering convenience, quality and style, the Coralais faucet collection brings sleek design continuity to the bath.

Available in

- *Polished Chrome (CP) Standard*



Centerset vanity faucet
K-15241-4



Rim-mount tub faucet
K-T15290-4



A. Tub/Shower Combination
K-T15601-4



B. Shower Only
K-T15611-4

Bathroom Fixtures

The Devonshire Faucet Collection

Capturing the elegance of a bygone era, the Devonshire Suite is reminiscent of old-world design. The suite's simple, striking combination of curves and lines adds refinement and distinctive visual impact to bath and powder rooms.

Available in

- *Polished Chrome (CP)*



Centerset vanity faucet
K-393-4



Rim-mount tub faucet
K-T398-4



A. Tub/Shower Combination
K-T395-4



B. Shower Only
K-T396-4



PLUMBING

The Vineyards at Nassau Valley Customer Selection Guide V1.0

THE BOLD LOOK
OF **KOHLER**®

Bathroom Fixtures

The Forte Faucet Collection

The Forté faucet collection combines fluid design lines with functionality. Solid brass construction and Kohler Vibrant finishes provide superior durability and reliability.

Available in

- Polished Chrome (CP)



Centerset vanity faucet
K-10270-4A



Rim-mount tub faucet
K-T10278-4A



A. Tub/Shower Combination
K-T10274-4A
B. Shower Only
K-T10276-4A



Optional Wet Bar Features



GE Profile™ Beverage Center

PCR06BATSS

- 150 can capacity or 126 cans and 12 bottle flexibility
- Adjustable Temperature Control
- Full-extension wine racks with beechwood fronts – Slides in and out with ease, making loading and unloading effortless
- Spillproof Glass Shelves – Help contain spills for ease of cleaning
- Tinted glass door with stainless steel accents – Delivers a high-end and modern appearance that blends with existing appliances and décor
- Interior display lighting – Illuminates the contents to make selection quick and easy
- Built-in capability

** Not available in all models. Refer to marketing plans*



Franke Element 41” Stainless Sink

ARX-110-14

The Franke shine and flawless finish have never been duplicated. Franke sinks are heavy 18 gauge stainless with the industry's highest percentages of chromium (18%) and nickel (10%) for a deep, rich glow and corrosion resistance. A lifetime investment that improves with use like fine sterling silver.



Kohler Essex® Entertainment Faucet

K-8761-VS

Perfect for your wet bar, the Essex entertainment sink faucet features ADA-compliant wristblade handles and single-hole installation for a clean, functional look. The swing spout provides the convenience and accessibility you need for entertaining large groups of friends and family. Solid brass construction and a one-piece ceramic valve that resists debris and hard water buildup ensure years of reliable performance.

- Ergonomic handle rotation provides on/off water control with only a quarter turn



INTERIOR OPTIONS

The Vineyards at Nassau Valley Customer Selection Guide V1.0

Lighting Fixtures

Sea Gull Lighting

The look that satisfies discerning taste, where past elements of design keep pace with today.

Sea Gull Lighting

For over 87 years, Sea Gull Lighting has grown to an established leader in the electrical and lighting industry. And now, we're proud to be A Generation Brands Company. Light fixtures by Sea Gull Lighting are the most sought after decorative, functional and specialty indoor lighting and outdoor lighting fixtures. Sea Gull Lighting manufactures and distributes over 3,500 light fixtures and lighting products that serve the residential, commercial, and architectural markets.



Powder Room
Westmont Collection
Brushed nickel finish
44019-962



Owner's Bath,
Secondary Baths &
Common Bath
Westmont Collection
1 fixture per sink
Brushed nickel finish
44020-962



Utility room & walk-in
closet
Sussex Collection
Brushed nickel finish
77065-962

Recessed Lighting

Recessed lighting is standard in the following areas (quantity and locations to be determined by floor plan):

- Foyer
- Kitchen
- Hallways
- Above every tub/shower

Upgrade options include:*

- Recessed and eyeball lighting in Living Rooms, Dining Areas, and Bedrooms
- Under-cabinet puck lighting in kitchens

Upgrade options available in select models

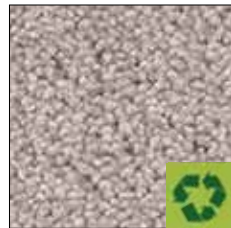


Carpet

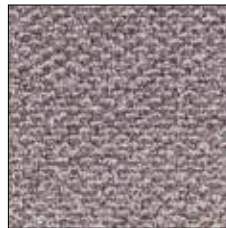
Carpet is included in Great Rooms/Living Rooms, Dining Rooms, all Bedrooms & Closets, Hallways, and Stairs. Multiple color choices and upgrade options are available.



Prize Winner II
Included



Sunset Key
Upgrade I



Zanzibar II
Upgrade I



Barcello
Upgrade II



Cave Springs
Upgrade II



Ashley Place
Upgrade III



Arbordale
Upgrade III



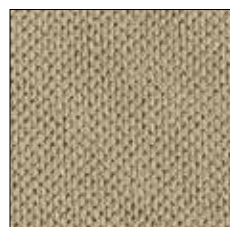
Hammond Square
Upgrade III



Humphrey Heights
Upgrade III



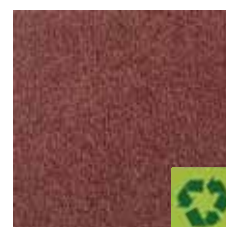
Clifton Park
Upgrade IV



St. Maarten II
Upgrade IV



Drennon Manor
Upgrade IV



Alva Lane
Upgrade IV



Casual Day
Upgrade V




Monument Valley II
Upgrade V



Visconti
Upgrade V

Also Available:

- Bancroft Manor, Upgrade II
- Wamsutter, Upgrade III
- Anchored Classics, Upgrade IV
- Huron Estates, Upgrade IV
- Bellmere, Upgrade V



Tile

Tile is included in Foyers & Owner's Bathrooms
Multiple color choices and upgrade options are available.



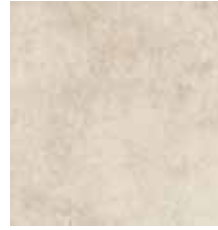
Brazos 12x12
Included



Ridgeview 12x12
Upgrade I



Scabos 12x12
Upgrade I



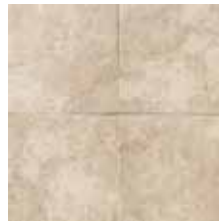
Brixton 12x12
Upgrade I



Village Bend 12x12
Upgrade II



Brancacci 12x12
Upgrade II



Salerno 12x12
Upgrade II



Gold Rush 12x12
Upgrade II



Villa Valetta 12x12
Upgrade III



Navelli 12x12
Upgrade III



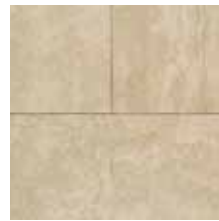
Castle De Verre 13x13
Upgrade III



Pietre Vecchie 13x13
Upgrade III



Canaletto 13x13
Upgrade III



Capriccio 13x13
Upgrade III

Also available: Portenza 14x14, Upgrade III

Hardwood

Portico by Mohawk



Oak Town 3" or 5"
Tier I (3"), Tier II (5")



Forest Lakes Oak 3"
Tier I



Richland Maple 3" or 5"
Tier II (3"), Tier III (5")



Nikko Bamboo
Tier II



Washburn Hickory 3" or 5"
Tier II (3"), Tier III (5")



Clarkton Ash 3" or 5"
Tier II (3"), Tier III (5")



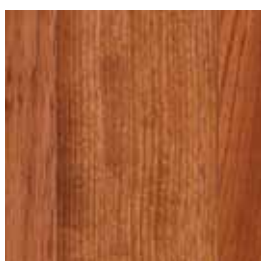
Pasadena Plank
Tier IV



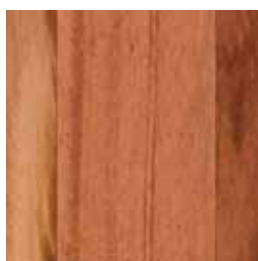
Stockton Cherry 3" or 5"
Tier IV (3"), Tier V (5")



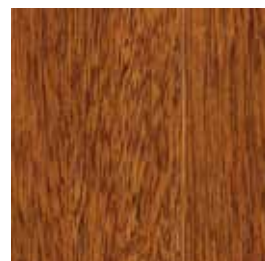
Greeley Walnut 3" or 5"
Tier IV (3"), Tier V (5")



Emporia Brazilian Cherry 3"
Tier IV



Emporia Tigerwood 3"
Tier IV



Emporia Timborana 3"
Tier IV



Emporia Santos Mahogany 3"
Tier V



Emporia Amendoim 3"
Tier V



Shangri-la African Paduk
Tier V



Shangri-la African Zebrawood
Tier V



Shangri-la Burmese Teak
Tier VI



Shangri-la African Ebony
Tier VI



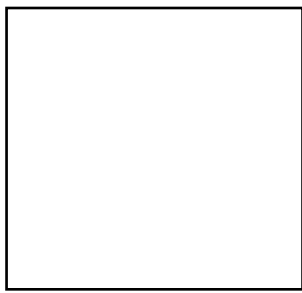
Shangri-la Antique Elm
Tier VII



Shangri-la Antique Heart Pine
Tier VII

Wall Tile

Bathroom Wall Tile



6 x 6



No Accent Strip

White



8 x 10



Scabos
Tier I



9 x 12



Brixton
Tier I



8 x 10



Gold Rush
Tier II



9 x 12



Brancacci
Tier II



10 x 14



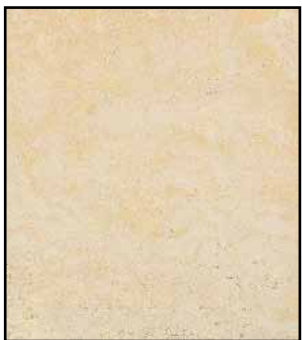
Salerno
Tier II



10 x 13



Navelli
Tier II



10 x 13



Capriccio
Tier III



10 x 13



Castle De Verre
Tier III

*Tile and accent samples are not shown to scale.
Other colors available in each style.*

Wall Tile

Kitchen Backsplash Tile



Brixton 6x6
Tier I



Salerno 6x6
Tier II



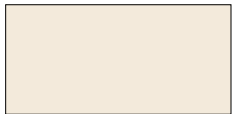
Gold Rush 6x6
Tier II



Village Bend 6x6
Tier II



Braccacci 6x6
Tier II



*Rittenhouse Square
3x6
Tier III



Capriccio
6.5x6.5
Tier III



Castle De Verre
6.5x6.5
Tier III

Tumbled Natural Stone



Crema Marfil 4x4
Tier IV



Emperador Dark 4x4
Tier IV



Sienna Gold 4x4
Tier IV



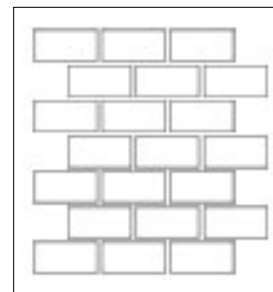
Botticino 4x4
Tier IV



Mediterranean Ivory
4x4
Tier IV

6x6 Kitchen tile options available in standard and diagonal applications.

*Rittenhouse Square tile available in brick lay only (see diagram).



Paint & Trim

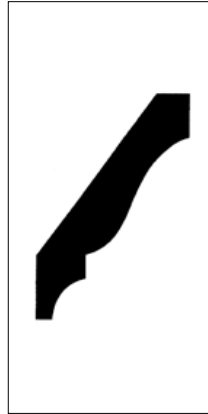


Standard trim in all units includes:

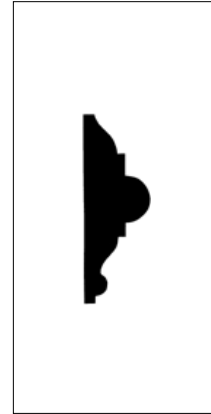
- 3 1/4" Base Moulding throughout
- 2 1/4" Casing on all windows and doors

Upgrades include:

- Addition of 4 5/8" Crown Moulding to Living Area, Dining Area, Owner's Bedroom, or Secondary Bedroom(s)
- Addition of 3" Chair Rail to Living & Dining Area



4 5/8" Crown Moulding



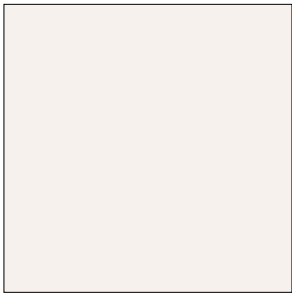
3" Chair Rail

Paint

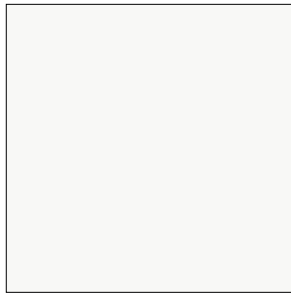


Standard

2 coats of Sherwin Williams Alabaster flat on all walls with Extra White semi-gloss on trim and doors



Alabaster



Extra White

Optional Fireplaces

Fireplaces

Heatilator Simplifyre 35"

Picture to represent fireplaces only, not mantels and surround



The Simplifyre, model SFE-35, offers the most realistic flame technology in an electric fireplace. It features the first flush hearth application in your choice of cabinet options from traditional to contemporary – plus optional decorative fronts. The Simplifyre offers a large, clean-faced, viewing area of 35" wide X 30 ½" high and a full brick refractory interior. The fireplace comes standard with an on/off remote, built-in fan and heater that produces 3,500 Btu/hour output.

Mantel & Surround

▣ Standard

The Winchester Mantel shown below is included with your fireplace selection. The Beige Natural Marble surround is an available upgrade option. The standard hearth and surround are slate.



Winchester Mantel
shown with Beige Natural Marble



INTERIOR FINISHES

The Vineyards at Nassau Valley Customer Selection Guide V1.0

Mantel & Surround

Mantel Upgrade Options

A slate harth and surround are included with your fireplace selection.
Marble and Granite upgrades are available.



Bridgeport Mantel
shown with Black Absolute Granite



Mt. Vernon Mantel
shown with Wheatfield Granite



Plymouth Mantel
shown with Green Granite



Portico Mantel
shown with Blue Pearl Granite

Refrigerators



GE® Energy Star® 21.0 Cu. Ft. Top-Freezer Refrigerator



GTH21KCXWW/GTH21KCXBB

- Adjustable, Spill Resistant Glass Shelves - Help contain spills for easy cleaning
- Adjustable Gallon Door Bins - Provides additional storage space for milk and other gallon-size containers
- Factory-Installed Icemaker - Makes ice automatically ensuring a ready supply
- Adjustable Humidity Vegetable/Fruit Crispers - Provide ideal storage environment for fruits and vegetables
- Snack Pan - Helps keep everyday foods like muffins and carrot sticks fresh
- Upfront Temperature Controls - Features easy-to-reach, easy-to-read temperature controls
- **Stainless Steel upgrade available / GTH21SCXSS**



GE® Energy Star® 25.0 Cu. Ft. Side-By-Side Refrigerator with Dispenser



GSH25JFXWW/GSH25JFXBB

- External Controls with actual-temperature display
- Adjustable Humidity Vegetable/Fruit Crispers - Provide ideal storage environment for fruits and vegetables
- Adjustable Temperature Deli Drawer - Keep meats and cheeses fresher, longer
- Adjustable Spillproof Glass Shelves - Helps to contain spills for ease of cleaning
- Snack Pan - Conveniently stores re-wrapped meats, cheeses and other snacks
- Adjustable Gallon Door Bins - Provides additional storage space for milk and other gallon-size containers
- Adjustable Spill Proof Glass Shelves - Helps to contain spills for ease of cleaning
- **Stainless Steel upgrade available / GSH25JSXSS**



APPLIANCES

The Vineyards at Nassau Valley Customer Selection Guide V1.0



Refrigerators



GE® Energy Star® 22.2 Cu. Ft. French Door Refrigerator



GFSF2KEXWW, GFSF2KEXBB

- High-gloss crown doors with hidden hinges - step up to a smooth finish with rounded doors and the clean look of concealed hinges
- Upfront electronic temperature controls - easy-to-use controls are located in an easy-to-reach position
- Factory-installed icemaker with water filtration system - refrigerator comes ready to automatically create filtered ice
- BrightSpace™ interior with GE Reveal® lighting - it's easy to find tasty treats under bright, clear interior lighting
- Two-level Slide 'n Store™ system - keep all your frozen favorites within easy reach
- Adjustable-humidity crispers - set the controls to keep foods just the way you like them
- Stainless Steel upgrade available / GFSS2KEXSS



GE Profile™ Energy Star® 22.2 Cu. Ft. French Door Refrigerator with Internal Water Dispenser



PFSS2MIXWW, PFSS2MIXBB

- High-gloss doors with top and bottom bevels - add a designer look with smooth, beveled doors
- Internal water dispenser with GE water filtration - clean filtered, chilled water is available with just a touch
- ClimateKeeper™ system - electronic controls, multiple electronic sensors and a multi-flow air system help provide even cooling
- Factory-installed icemaker with water filtration system - refrigerator comes ready to automatically create filtered ice
- BrightSpace™ interior with GE Reveal® lighting - it's easy to find tasty treats under bright, clear interior lighting
- Freshness Center™ - maintain the fresh tastes of fruits and vegetables with two humidity-controlled drawers
- **Stainless Steel upgrade available / PFSS2MIXSS**



APPLIANCES

The Vineyards at Nassau Valley Customer Selection Guide V1.0.



Refrigerators



GE Profile™ Energy Star® 20.8 Cu. Ft. French Door Refrigerator with External Water Dispenser



PFCF1NJXWW/ PFCF1NJXBB

- Counter-Depth Design - offers a built-in look without the built-in expense
- High-Gloss Doors with Top and Bottom Bevels - offers a smooth contoured surface, with concealed hinges providing a dramatic look
- External Water Dispenser with Actual Temperature Display, Child Lock and Door Alarm - provides chilled, filtered water and displays the actual internal temperature of the refrigerator
- ClimateKeeper™ Temperature Management System - digital controls and electronic sensors give you a greater degree of control over food preservation
- Factory-Installed Icemaker with Water Filtration System - automatically creates fresh, filtered ice cubes
- BrightSpace™ Interior with GE Reveal™ Lighting - cast a natural-looking glow throughout the refrigerator
- **Stainless Steel upgrade available / PFCF1NJXSS**



GE Profile™ Energy Star® 25.8 Cu. Ft. French Door Refrigerator with External Water Dispenser



PFSF6PKXWW/PFSF6PKXWWBB

- Stainless steel doors with top and bottom bevels - step up to a striking finish with contoured doors that accentuates kitchen décor
- Integrated dispenser - enjoy filtered water and a fresh look with a color-matched dispenser
- ClimateKeeper™ system with dual evaporators - separate evaporators create the ideal environments to maintain fresh and frozen foods
- LED lighting - find exactly what you've been looking for under crisp, clear lighting
- Freshness Center™ with full-width drawer - maintain fresh tastes with two humidity-controlled crispers and a full-width drawer
- Two-level Slide 'n Store™ system - get instant access to frozen foods in large and extra-large drawers
- **Stainless Steel upgrade available / PFSS6PKXSS**



APPLIANCES



Ranges

GE® 30" Free-Standing Electric Range*



JBP66DMWW/JBP66DMBB

- Self-Clean Oven - conveniently cleans the oven cavity without the need for scrubbing
- Super-Large 5.3 Cu. Ft. Oven Capacity - provides an impressively large oven interior to cook more dishes and large meals at once
- TrueTemp™ System - delivers even heat distribution and maximum oven control
- Dual Size Ribbon Element - offers a convenient choice of using a 9" or 12" heating element, depending on the size of the pan
- Ceramic Glass Cooktop - a smooth cooktop surface makes cleaning quick and easy
- QuickSet Oven Controls - feature an easy-to-use design which allows you to set precise cooking temperatures
- **Stainless Steel upgrade available / JBP66SMSS**

GE Profile™ 30" Free-Standing Electric Range*



JB900TKWW/JB900TKBB

- Self-Clean Oven - conveniently cleans the oven cavity without the need for scrubbing
- Super-Large 5.3 Cu. Ft. Oven Capacity - provides an impressively large oven interior to cook more dishes and large meals at once
- Warming Drawer - convenient drawer keeps breads, desserts or just-cooked foods warm and ready-to-serve
- Dual Size Ribbon Elements - offers a convenient choice of using a 6" or 9" on one and a 9" or 12" on the other heating element, depending on the size of the pan
- Warming Zone - provides low heat capability for foods, making meal coordination simple
- Self-Clean Heavy-Duty Oven Racks - double coated porcelain-enameled racks no longer require hand cleaning
- **Stainless Steel upgrade available / JB900SKSS**

*This model will be replaced by PB900TPWW, PB900DPBB, and PB900SPSS.



APPLIANCES

The Vineyards at Nassau Valley Customer Selection Guide V1.0 .



Ranges

GE® 30" Free-Standing Gas Range



JGBP28DEMWW/JGBP28DEMBB

- Self-Clean Oven - conveniently cleans the oven cavity without the need for scrubbing
- Extra-Large Oven Capacity - provides a large oven interior ideal for cooking more items at once
- TrueTemp™ System - delivers even heat distribution and maximum oven control
- QuickSet Oven Controls - feature an easy to use design that lets you set precise cooking temperatures
- All Purpose Burners - deliver a wide range of heat output ideal for most cooking requirements
- Sealed Cooktop Burners - eliminate the space between the burners and the cooktop to help contain spills and boil over liquids, ensuring easy cleanup
- **Stainless Steel upgrade available / JGBP28SEMSS**

GE Profile™ 30" Free-Standing Self Clean Gas Range with Warming Drawer



PGB908DEMWW/PGB908DEMBB

- Self-Clean Oven - conveniently cleans the oven cavity without need of scrubbing
- Large Oven Capacity - provides an impressively large oven interior for cooking more dishes and large meals at once
- Deep Recessed Cooktop - designed with a recessed surface to help contain spills and make cleaning easy
- PowerBoil™ 17,000 BTU Burner - delivers 17,000 BTUs of forceful heat for rapid boiling
- Precise Simmer Burner - offers a low setting of 600 BTUs, ensuring more temperature control for simmering
- Heavy Cast Grates
- **Stainless Steel upgrade available / PGB908SEMSS**



APPLIANCES

The Vineyards at Nassau Valley Customer Selection Guide V1.0



Ranges

GE Profile™ 30" Free-Standing Dual-Fuel Double Oven Range



P2B918DEMWW/P2B918DEMBB

- Electric Convection Oven - features electric heating elements and a fan that circulates air throughout the oven cavity, to deliver uniform and savory cooking results
- Self-Clean Oven - conveniently cleans the oven cavity without need of scrubbing
- Extra-Large Oven Capacity - provides a large oven interior ideal for cooking more items at once
- Center Oval Burner - adds a fifth element to the center of the cooktop to accommodate large cookware and deliver ideal results
- Non-Stick Griddle - offers a flat cooking surface, placed over the center oval burner, for cooking multiple foods at once
- Lower Oven - offers an additional 1.0 cu. ft. of capacity for convenient baking from 150 degrees to 450 degrees
- **Stainless Steel upgrade available / P2B918SEMSS**



APPLIANCES



Microwaves

GE Spacemaker® Over-the-Range Microwave Oven



JNM1541DMWW/JNM1541DMBB

- 1.5 cu. ft. capacity - 950 watts (IEC-705 test procedure)
- Convenience Controls - allow cooking and reheating at the touch of a button
- Auto and Time Defrost - automatically defrosts for a specified amount of time
- Two-speed, 300-CFM venting system (with recirculating exhaust fan) - quickly removes the smoke and steam from the cooktop
- Turntable On/Off - ideal for oversized, oblong-shaped dishes
- Two-Speed, 300-CFM Venting System - quickly removes smoke and steam from the cooktop
- Removable Oven Rack - makes multi-dish cooking possible
- **Stainless Steel upgrade available / JNM1541SMSS**

GE Spacemaker® Over-the-Range Microwave Oven



JNM1851DMWW/JNM1851DMBB

- 1.8 cu. ft. capacity - 1100 Watts (IEC-705 test procedure)
- Circuwave™ 1100 cooking system - patented system provides more power for faster more even cooking results
- Sensor cooking controls - automatically adjust the time and power for exceptional cooking results
- 1-lb. Quick Defrost - evenly defrosts a pound meat, poultry or fish in a fraction of the usual time, without precooking or turning the food
- 14-1/4" recessed turntable - large enough to handle 5-qt. casserole dishes and can easily be removed for cleaning
- Four-Speed, 300-CFM venting system with boost - with recirculating exhaust fan - quickly moves smoke and steam from the cooktop
- **Stainless Steel upgrade available / JNM1851SMSS**



APPLIANCES

The Vineyards at Nassau Valley Customer Selection Guide V1.0



Microwaves

GE Profile Spacemaker® 1.8 Cu. Ft. XL1800 Microwave Oven with Recirculating Venting



PNM1871SMSS

- Circuwave™ 1100 cooking system - patented system provides more power for faster more even cooking results
- Sensor Cooking Control - provides a built-in sensor in the upper microwave that automatically calculates and adjusts cooking times and power levels for favorite foods
- 1-lb. Quick Defrost - evenly defrosts a pound meat, poultry or fish in a fraction of the usual time, without precooking or turning the food
- Full-Width Active Hidden Vent - out of sight when not in use, the oven vent hides behind the sleek top panel for a sophisticated, easy-to-clean look
- 14-1/4" recessed turntable - large enough to handle 5-qt. casserole dishes and can easily be removed for cleaning
- Only available in stainless



Dishwashers

GE® Built-In Dishwasher



GSD4000NWW/GSD4000NBB

- 5-level PowerScrub™ wash system with PowerShower - 5 wash levels and redesigned wash arms direct water precisely for a quiet and efficient clean
- Electronic controls - provide a modern look with a smooth, easy-to-use, easy-to-clean surface.
- 100% Water Filtration with ExtraFine™ Filter - clean water helps deliver clean dishes
- 2/4/8-Hour Delay Start - makes it easier than ever to wash dishes at any hour or washing dishes even when the family is asleep
- Meets 2007 ENERGY STAR® Criteria - can reduce utility bill by using less water to get dishes clean
- China/Crystal Cycle - protects delicate dishes and glassware by lowering the water temperature during the cycle
- **Stainless Steel upgrade available / GSD4060NSS**
- Available in white or black

GE Profile™ Built-In Dishwasher



PDW7800NWW/PDW7800NBB

- Meets 2007 ENERGY STAR® Criteria - can reduce utility bill by using less water to get dishes clean
- Giant Tub with Maximum Capacity Nylon Racking - holds tall and oversized items; washes 16 place settings at once
- Four-Position Adjustable Upper Rack - moves up, down and diagonally for maximum loading flexibility
- Countdown display with 1-9 hour Delay Start - signals remaining cycle time and makes it easier than ever to wash dishes at any hour, or washing dishes even when the family is asleep
- CleanSensor™ - monitors and adjusts the wash cycle for a superior clean
- 4 utility shelves with StemSafe™ - multiple shelves create space and protect stemware
- **Stainless Steel upgrade available / PDW7880NSS**



APPLIANCES

The Vineyards at Nassau Valley Customer Selection Guide V1.0



Dishwashers

GE Profile™ Dishwasher with SmartDispense™ Technology



PDWT400PWW/PDWT400PBB

- SmartDispense™ Technology - holds an entire bottle of liquid automatic dishwasher detergent, dispensing the right amount based on water hardness and soil levels to get dishes incredibly clean
- 6-Level BrilliantClean™ Towerless Wash System with CleanSensor™ - scrubs dishes clean with three full-sized wash arms, six levels of wash action and a sensor that continually monitors and adjusts the wash cycle for a superior clean
- Giant Tub with Maximum Capacity Nylon Racking - holds tall and oversized items; washes 16 place settings at once
- 2/4/8-Hour Delay Start - makes it easier than ever to wash dishes at any hour or washing dishes even when the family is asleep
- 2 sets fold down tines in lower rack - provides loading flexibility for pots, pans and large bowls
- **Stainless Steel upgrade available / PDWT480PSS**



APPLIANCES



Washers & Dryers

➡ GE® 3.5 Cu. Ft. King-size Capacity Washer



WCRE6270H

- ENERGY STAR® Qualification — Means less energy waste and lower utility bills
- 3.5 Cu. Ft. King-Size Stainless Steel Wash Basket — Washes more at once, which means fewer loads and less time spent doing laundry
- HydroWave™ wash system — Has variable speeds to match the wash action to the clothing type; Longer, slower travel through the water improves cleaning performance and is gentler on your clothes
- Five wash/spin speed combinations — Speeds are matched to fabric type for better clothes care
- 31 Wash Cycles — Deliver optimal cleaning results for your clothing
- 6 Wash/Rinse Temperatures — Offer greater degree of control over fabric cleaning and care

➡ GE® Long Vent 7.0 Cu. Ft. Super Capacity Dryer



Electric: DLSR483EHG

- 7.0 cu. ft. super capacity — Handles large-size items and family-size loads
- Long Vent — Delivers exceptional drying performance with duct runs of up to 150 ft.* for greater installation flexibility (*of equivalent ducting)
- Rotary electronic controls with cycle status lights — Make it easy to select and monitor wash cycles
- Four heat selections — Provide the right temperature for the right drying results
- Eight dry cycles — A variety of fast, flexible options for drying clothes
- Variable End-Of-Cycle Signal — Adjustable volume offers added flexibility



APPLIANCES

The Vineyards at Nassau Valley Customer Selection Guide V1.0



Washers & Dryers

GE Profile Harmony™ 4.0 Cu. Ft. King-size Capacity Washer with Stainless Steel Basket



WPGT9360E

- HydroView™ glass lid — Allows you to view clothes during the cleaning process, without opening the lid or stopping the wash cycle
- HydroHeater™ — Increases wash temperature to reduce bacteria and provide better cleaning for the really tough stains
- ENERGY STAR® Qualification — Means less energy waste and lower utility bills
- LCD touchscreen with English/Spanish option — Users can select English or Spanish-language option as they select dry clothes
- Direct-drive motor with adaptive spin speed combinations — Runs at just the right speed for optimal cleaning results
- HydroWash™ system with Infusor™ — Clean clothes thoroughly and gently, without agitation
- Also available in white

GE Profile Harmony™ 7.3 Cu. Ft. King-size Capacity Dryer with Stainless Steel Drum



Electric: DPGT750EC

- CleanSpeak™ Communication System — The washer communicates electronically with the dryer, which then presets dry cycles for better clothes care, increased time savings and greater convenience
- DuoDry™ System — Quickly and consistently dries all types of clothes
- Delicate Cycle with Extra-Low Heat Setting — Maintains an average fabric temperature of 125 degrees F to protect fine handwashables
- Stainless Steel Drum — Resists rust and won't chip, peel or snag clothes
- Five heat selections — Temperatures are matched to fabric type for better fabric care
- Adaptive cool-down — Tumbles clothes with cool air to reduce
- Also available in white



General Information

Characteristics of Natural Stone

- Marble, granite and other natural stones are products of nature. As such, they have natural characteristics such as pitting, veining, fissures, fractures, natural flaws, etc.
- Not all colors, flow, movement, and marking will be uniformly present in every piece of granite and marble, even of similar type and variety. These unique characteristics enhance the beauty of natural stone.



Carpeting

- Carpet is produced in a variety of widths, most being 12', 13'6" or 15'. Due to this fact, seams are an inevitable part of the installation process. Some seams will be apparent despite the level of skill employed in the installation.
- Any "pull" or loose thread in your carpet should be carefully tucked back into the carpet or cut cleanly with a pair of scissors. Never pull on a loose thread.

Other

- Nail pops in the walls of your unit and cracks in between pieces of trim are expected products of construction and will be repaired after your 11 month service request. Should you choose to paint your unit after settlement, this component of your warranty no longer applies.

The Schell Brothers Difference

At Schell Brothers, we pride ourselves on providing you with the highest quality home and the best service in the industry. This dedication to quality and service has been guiding the company since its beginning. Simply put, Schell Brothers was founded upon the premise of creating a “better” builder. After years of developing communities using other builders, we became more and more aware of the need for a customer oriented builder. We decided the only way to ensure our buyers were provided with high quality homes and great customer service was to start our own construction company. At Schell Brothers, our performance is measured by the happiness of our customers and not by profit. We are true believers in the philosophy that if our customers are happy, financial success will follow. To achieve our goal of being the best builder in the area, everything we do is guided by the principles of what we call the Schell Brothers Difference.

The Schell Brothers Difference begins with quality construction. While many construction companies focus on maximizing profit by trying to reduce costs by using cheaper materials, our philosophy is exactly the opposite. We are constantly searching for ways to provide our buyers with better materials and higher quality construction while still keeping the price of our homes reasonable. At Schell Brothers, one of our philosophies is to always ask ourselves “What would our customer want?” Applying this philosophy, we strive to provide the highest quality home possible even if it means making a smaller profit.

In addition to the quality of construction, another area where you’ll notice the Schell Brothers Difference is customer service. Schell Brothers has an entire Customer Service department dedicated to serving our home owners after settlement. Our Customer Service department was given the directive of keeping our customers happy no matter what it takes. We will not desert you after settlement. We realize that your home may need some repairs and tweaking from time to time. In order to address these issues quickly and thoroughly, the Schell Brothers Customer Service department is staffed with qualified tradesmen ready to respond at a moment’s notice.

